

**CELEBRATING THIRTY YEARS 1993-2022**

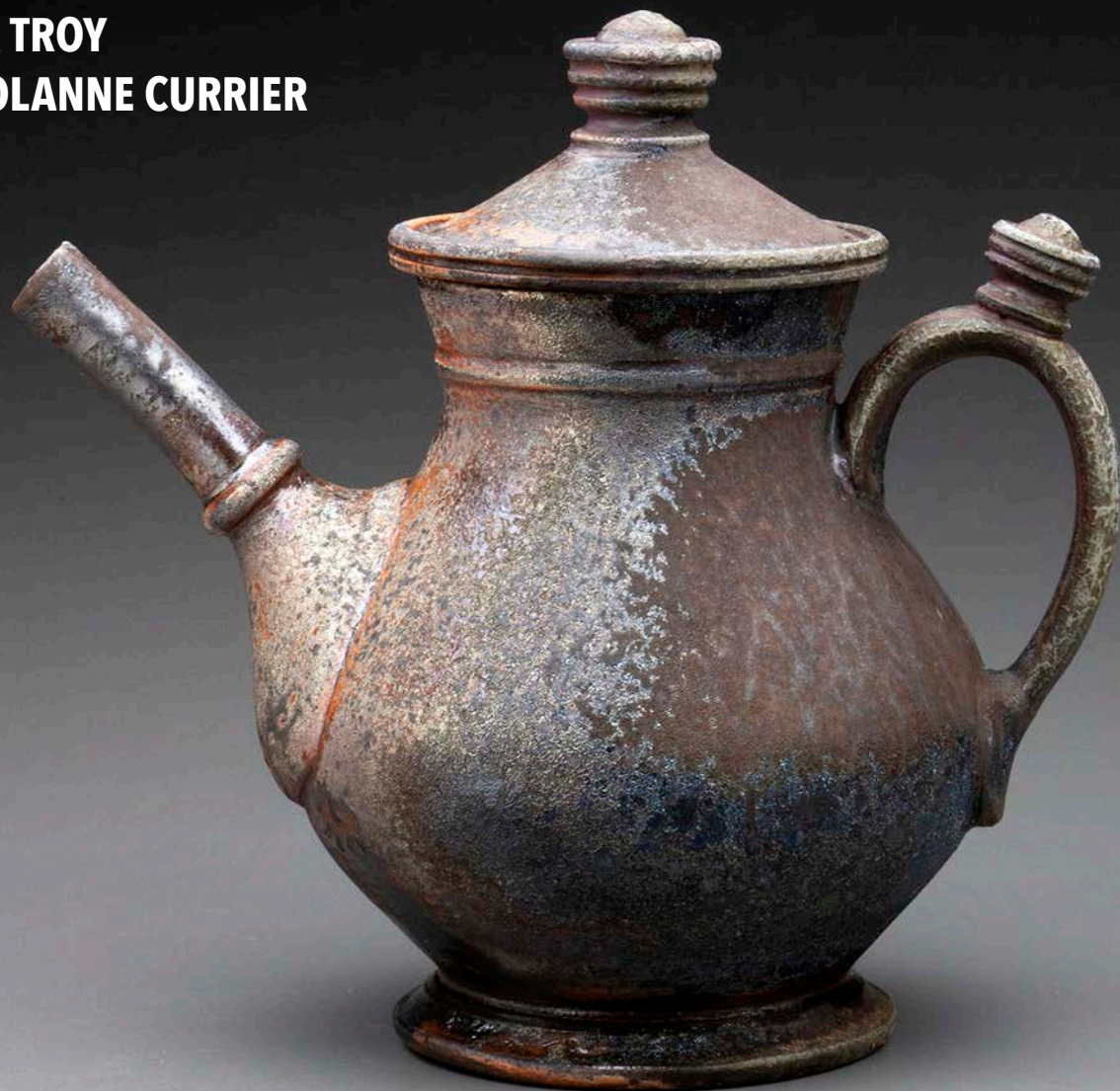
# **STRICTLY FUNCTIONAL POTTERY NATIONAL<sup>©</sup>**

**JURORS:**

**JACK TROY**

**CAROLANNE CURRIER**

**2  
0  
2  
2**



**Seth Green - Fort Wayne, IN**

**THE BEST IN CONTEMPORARY FUNCTIONAL CERAMICS**



Ian Stainton - Spring Mills, PA



Gene Hotaling - Ocala, FL

# 30<sup>TH</sup> ANNUAL STRICTLY FUNCTIONAL POTTERY NATIONAL<sup>©</sup>



Tina Gebhart - Gettysburg, PA





Samuel Newman - Portland, OR

## THE BEST IN CONTEMPORARY FUNCTIONAL CERAMICS

### JUROR HALL OF FAME

#### 2022 Jack Troy and Carolanne Currier

- 2021 Roberto Lugo  
Margaret Kinkeade and  
Brooks Oliver
- 2020 Julia Galloway
- 2019 Malcolm Mobutu Smith
- 2018 Ben Carter
- 2017 Linda Sikora
- 2016 Simon Leach
- 2015 Matt Long
- 2014 Christa Assad
- 2013 Jim Connell
- 2012 Jack Troy**
- 2011 Mary Barringer
- 2010 Bill van Gilder
- 2009 Pete Pinnell
- 2008 Linda Arbuckle
- 2007 Malcolm Davis
- 2006 Tom Coleman
- 2005 John Glick
- 2004 Susan Peterson
- 2003 Wayne Higby
- 2002 Jack Troy**
- 2001 Linda Christianson
- 2000 Ken Ferguson
- 1999 Warren MacKenzie
- 1998 Cynthia Bringle
- 1997 Val Cushing
- 1996 Phyllis Blair Clark
- 1995 Chris Staley
- 1994 Bill Daley
- 1993 Jack Troy**



Photo by: John Shetron

739 pieces were submitted by 282 artists. 132 were accepted from 130 artists; two of whom had two pieces accepted.

It's a great pleasure to look forward every decade to judging this prestigious exhibition. I juried the first in 1993 and for some reason, Jean Lehman decided to honor me every ten years, so this was my fourth, and the first to share with another person. Carolanne Currier and I were curious whether differences of opinion might enliven our relationship, but except for a few trade-offs at the very end, we often concurred, and had some enjoyable discussions. If your work wasn't selected, and it's any consolation each of us can say, "Well, don't look at me!"

In 1993 it wasn't uncommon to view a slide of a back yard with a mug on a stump, and to assume the stump wasn't part of the entry. One tall, covered jar I accepted had obviously been propped up for the photo, and couldn't stand on its own when it arrived: back in its box it went - another high-mileage pot in search of an adoptive home. Without my four-decade remembered archive, how could this year's pieces seem so highly accomplished? And how could Terry Gess's plates I bought from the first show continue to look as good as they did in 1993, when I thought, "Square plates? Why not?"

Photography has improved vastly from past years, and yet, as Carolanne points out, submitting a single image of, for example, a cup, is only a half-hearted way of entering a show. Once, when paddling across a Canadian lake with other teenagers, we spotted a huge pike floating on its side. The bottom had been eaten away by turtles, but that didn't stop us from paddling to shore and posing with our fishing rods and the pike's good half to the camera. That lesson would make me a lifelong skeptic about pots photographed from one side.

Carolanne and I were in total agreement that there were enough excellent submissions to account for two exhibitions. Selecting which of the 75 teapots to include was exasperating, so we tried to represent the entire spectrum, from contemporary updates of generic icons to more innovative examples. (The spread, unlike that of previous years, was not wide; submissions tended to represent refinements to what potters had already been making, in some case, for decades). Unlike in years past, teapot makers seemed to have rejected magic mushrooms for valium.

Not being a citizen of Facebookistan or other social media platforms enabled me to experience more than 90% of the images in identity limbo. I recognized only two makers, whereas Carolanne, who is online-savvy, knew the origins of many submissions, and agreed not to let on until after we'd made our selections. If your work had a "brand," it was lost on me. Visual illiteracy - not associating an object with distracting personhood - is an advantage in judging a show for the same reason Terry Gross is never in the same room with her interviewee.

Rob Barnard's book, *In Search of Relevance*, contains a chapter, "The Shakers Versus the Rockettes," in which he quotes Kurt Andersen's comment on the Whitney Museum's 20th century design exhibition: "In the battle for America's aesthetic soul, it's the Shakers versus the Rockettes.... Austerity has tended to lose the fight to pizzazz." The same can be said about contemporary ceramics, with its sophisticated surface decoration. Sometimes I had to look past graphic embellishment to focus on the pot in the background, while the strictly functional harpy kept hissing, "But will it pour?" (I always test-pour every teapot).

The SFPN exhibition has been happening through the graces and commitment of innumerable volunteers for long enough to be literally making history through chronicling the development of studio ceramics. Wouldn't it be a fine project for the right person to look through the thousands of images of selected pieces and assess trends, styles, and methodology over the decades? It needn't be now, necessarily, but marking the 50th year with an illustrated catalogue and an essay or two would recognize the contribution each exhibition has made to our genre decade after decade.

If judging an exhibition is a visual entrée, handling the work is the dessert. Hand-eye confirmation aligns maker and beholder. It will be a pleasure to add our fingerprints to the invisible history of each piece. Thank you for entering the show.

Sincerely,  
Jack Troy

## 2022 Strictly Functional Pottery National Exhibition Carolanne Currier's Statement

Jurying the Strictly Functional Pottery National exhibition was the first time I juried a show with another person. It was a privilege to share the duties with Jack Troy. While having multiple jurors reduces the chance for any personal bias, it does add a layer of complexity for the jurors. Luckily, the format for the images submitted was such that Jack and I could each make our own selections and compare them at the end. Kudos to the organizers for providing such a great format! As it turned out, Jack and I agreed on the vast majority of pieces, and only had to make concessions on a few. It was a wonderful experience!

As expected, the quality of the submissions to this show was excellent! There were many submissions that were show-worthy that couldn't be included because the number of pieces for the exhibition space was limited. Jack and I felt that there were at least 60 or 70 additional pieces that could have been included.

I have a few comments on the jurying procedure. I hope they will be beneficial to everyone submitting work to this and other shows, as well as to future jurors.

I engage in social media, and therefore recognized a lot of the potters' work that was submitted. I was careful not to let that influence my decisions. I was diligent in picking pots based on the images that were presented, rather than the artist's reputation or my knowledge of pieces that the potter COULD produce. Jack doesn't engage in any social media, so he did not have the recognition factor to deal with.

Carolanne Currier

It is difficult to jury pieces with only one image provided. How can you tell what a bowl is like when you can only see the inside, and not the profile or the foot? Or how can you judge a vase when you can only see one side? As someone who takes photos for both Jack and myself, I understand it's a nuisance to take multiple pictures of each piece, but from a juror's point of view, the more information you can provide, the better the chance of the piece being accepted.

We both had a bit of trouble jurying some of the mixed media submissions. Sometimes a second medium is integral to the function of a pot or only a small portion of the piece; a cane handle on a teapot for example. We found that acceptable. But if the second medium was only for presentation purposes, we judged the functional ceramic portion on its own. If it was acceptable, we accepted the submission with the second medium included. If the functional ceramic portion wasn't acceptable, we rejected it. We felt that we might jury things differently in a different show, but because the basis of this show is 'functional pottery', we felt that part needed to stand on its own.

The Strictly Functional Pottery National is known as one of the best pottery shows in the country. It was a real honor to be part of the jurying team for this show. I hope everyone enjoys our selection of contemporary functional pottery.

Sincerely,  
Carolanne Currier



Jack Troy

2022 SFPN CASH AWARDS

FIRST PLACE	Standard Ceramic Supply Co.
SECOND PLACE	Margaret Seidenberg-Ellis Ceramics
INNOVATION AWARD	Pennsylvania Guild of Craftsmen
BEST THROWN AND ALTERED AWARD	Bailey Pottery Equipment Corp.
JEAN LEHMAN FORM & FUNCTION AWARD	Karen Peiffer Pottery
BEST HANDBUILT AWARD	Amy Burk Pottery
BEST TEAPOT AWARD	Kevin Lehman's Pottery
BEST USE OF COLOR AWARD*	AMACO - American Art Clay Co.
POCONO AWARD*	Pocono Chapter Pennsylvania Guild of Craftsmen
FOUNDER'S AWARD*	Scott Jones, Founder of the SFPN

2022 SFPN PERMANENT COLLECTION ACQUISITIONS\*

PIECES WILL BECOME	Bailey Pottery Equipment Corp.
PART OF THE FOLLOWING	Ceramics Monthly
PERMANENT COLLECTIONS:	George School
	Jeremy McGarvey
	John Ground
	L&L Kiln Manufacturing, Inc.
	Richard Oelschlaeger
	Skutt Ceramic Products

\*Awards selected by the award sponsors, all others by the jurors.

# The 2022 Strictly Functional Pottery National<sup>®</sup> exhibit is grateful for the generous support of the following sponsors:

2022 SFPN VISIONARIES

Bailey Pottery Equipment Corp.  
PO Box 1577  
Kingston, NY 12402  
800.431.6067  
[www.baileypottery.com](http://www.baileypottery.com)

Lancaster Creative Factory  
580 S Prince St  
Lancaster, PA 17603  
717.203.6679  
[lancastercreativefactory.org](http://lancastercreativefactory.org)  
[www.strictlyfunctionalpottery.net](http://www.strictlyfunctionalpottery.net)

Lancaster Museum of Art  
135 North Lime Street  
Lancaster, PA 17602  
717-299-9940

Standard Ceramic Supply Co.  
PO Box 1624  
Pittsburgh, PA 15242-0240  
412.276.6333  
[www.standardceramic.com](http://www.standardceramic.com)

2022 SFPN PATRONS

AMACO - American Art Clay Co.  
6060 Guion Road  
Indianapolis, IN 46254  
800.374.1600; 317.244.6871  
[www.amaco.com](http://www.amaco.com)

Amy Burk Pottery  
Lancaster, PA

Ceramics Monthly  
735 Ceramic Place, Suite 100  
PO Box 6102  
Westerville, OH 43081  
614.890.4700  
[www.ceramicsmonthly.org](http://www.ceramicsmonthly.org)

Clayworks Supplies  
4625 Falls Road  
Baltimore, MD 21209  
410.235.5998  
[www.clayworkssupplies.com](http://www.clayworkssupplies.com)

George School  
1690 Newtown Langhorne Road  
Newtown, PA 18940  
215.579.6500

John Ground  
Holtwood, PA

Jeremy McGarvey  
Lancaster, PA

2022 SFPN PATRONS

Karen Peiffer Pottery  
Lititz, PA

Kevin Lehman's Pottery  
560 S Prince Street  
Lancaster, PA 17603  
717.509.7547  
[www.klpottery.com](http://www.klpottery.com)

L&L Kiln Mfg. Inc.  
505 Sharptown Road  
Swedesboro, NJ 08085  
877.455.5456  
[www.hotkilns.com](http://www.hotkilns.com)

Margaret Seidenberg-Ellis Ceramics  
Cornwall, PA  
[www.msepots.com](http://www.msepots.com)

Pennsylvania Guild of Craftsmen  
335 N Queen Street  
Lancaster, PA 17603  
717.431.8706  
[www.pacrafts.org](http://www.pacrafts.org)

Pocono Chapter,  
PA Guild of Craftsmen  
[www.poconocrafts.com](http://www.poconocrafts.com)

Richard Oelschlaeger  
California

Skutt Ceramic Products  
6441 SE Johnson Creek Road  
Portland, OR 97206  
503.774.6000  
[www.skutt.com](http://www.skutt.com)

2022 SFPN FRIENDS

Millersville University  
Clay Students  
[www.millersville.edu](http://www.millersville.edu)

Scott Jones  
Pennsylvania

Mt. Royal Printing Company  
1160 Enterprise Road  
East Petersburg, PA 17520  
717.569.3200

CELEBRATING THIRTY YEARS  
30 | SFPN

SFPN encourages you to support the exhibition. Tell your friends and neighbors about it!  
If you wish to donate to the SFPN, please visit [www.strictlyfunctionalpottery.net](http://www.strictlyfunctionalpottery.net) for more information about becoming a sponsor or donor.



We are excited to have Jack Troy and Carolanne Currier jury the Thirtieth annual SFPN. The SFPN founder, Scott Jones, asked Jack Troy to jury the very first show and Jean Lehman, our beloved friend and former co-director, followed by asking Jack to be the tenth and twentieth juror. We are proud to carry on this tradition. This year, however, there is a twist – we are excited to have Carolanne Currier join Jack in the process.

Carolanne Currier received a BA in Art from Eckerd College in St. Petersburg, FL and spent the next 30 years pursuing a career in the health field. After retiring, she decided to explore some of the artistic media she put aside for her career. At this point she has been a full-time potter for 10 years. She lives in Huntingdon, PA, where she shares a studio and several kilns with another potter. Carolanne enjoys atmospheric firings and uses both wood and gas kilns to get the looks she likes on both functional and decorative pieces and is currently developing clay bodies that are responsive to the soda-firing technique. Carolanne has had her work published in ceramic magazines and has exhibited her work in various national and international shows. Her pots can be found in homes and private collections internationally.

Jack Troy, teacher, potter, and writer, retired from Juniata College in 2006, where he taught for 39 years. He has led over 230 workshops for potters at colleges, universities, and art centers in the U. S. and abroad. His career has taken him to 13 countries, and his work is in many private and public collections, including the Smithsonian Institution, Shigaraki Ceramic Cultural Park (Japan), Auckland (NZ) Museum of Art and the Kalamazoo Institute of Art. His first book, *Salt Glazed Ceramics*, was published in 1977. In 1978 he built Pennsylvania's first anagama style kiln at Juniata College, and personal anagamas at his home in 1987 and 2006. In 1995 he published *Wood-fired Stoneware and Porcelain*. His collection of poems, *Calling the Planet Home*, was published in 2003 and more than 60 of his articles, book reviews, and exhibition catalogue essays have appeared in the major periodicals in his field. The Pennsylvania Council on the Arts awarded him two Craft Fellowships for his work in ceramics, and a Fellowship in Literature for his poetry. He was selected by the Council to make the awards for the 2005 Governor's Awards for the Arts. In 2012 he received the Excellence in Teaching Award from NCECA, the National Council for Education in Ceramic Arts.

Jack Troy and Carolanne Currier selected 132 pieces from 130 artists for this year's exhibition. We believe this is another wonderful show with something for everyone to enjoy and appreciate. We thank all the many volunteers and organizations that help with making this show a reality, and we thank all the applicants who have been faithfully applying for years and the new potters who took the chance this year to apply. And, as always, thank you to the patrons that keep coming in to view and support this wonderful exhibition.

Enjoy the show.

*Amy Burk and Kevin Lehman  
Co-Directors, SFPN*



Amy Burk



Kevin Lehman



Alexandra Saunders - Baton Rouge, LA

The Lancaster Creative Factory is proud to sponsor the Strictly Functional Pottery National, continuing its thirty year tradition of celebrating functional ceramics.

### Co-Directors

Amy Burk

Kevin Lehman

### Editors

Lois Wilkins

Margaret Seidenberg-Ellis

### Marketing

Reagan Lehman

### Instagram

Krissy Ramirez



Janet K. Burner - Tucson, AZ

CELEBRATING THIRTY YEARS  
30 | SFPN





Brooke S. Millecchia - Fairport, NY



Wade F. MacDonald - Birmingham, AL



Stephen Fisher - Caldwell, ID



Phil Haralam - Greensboro, NC



Sara Alfieri  
Canandaigua, NY  
Green Panel Tasting 5 Flight  
5.3x21.4x6.4, White Stoneware, ^5  
Oxidation  
\$650.00



Aaron Anslow  
Bethany, WV  
Carved Fish Jar  
11x9x9, Stoneware, ^6, Electric  
\$290.00



Noel Bailey  
Waitsfield, VT  
Teapot  
7.5x7.5x6, Porcelain, ^11, Gas  
Reduction  
\$450.00



Ian Bassett  
Concord, CA  
Jar  
8x6x6, White Stoneware, ^10, Wood  
Soda  
\$145.00



Ann Batton  
Asheville, NC  
Black and White Goblet  
4.5x3x3, Porcelain, ^7, Electric  
\$90.00



Casey Beck  
Lincoln, NE  
Pitcher  
13x6.8x5.3, White Stoneware, ^10  
Reduction, Soda  
\$222.00



Richey Bellinger  
Portland, OR  
Lidded Jar - Blue/Brown  
9x5.5x5, Porcelain, ^10, Gas  
Reduction  
\$150.00



Brandon Bishop  
Athens, GA  
Face Cup  
3.8x3.8x3.8, Red Stoneware, ^6  
Electric  
\$55.00



Shannon Blakey  
Columbia, MO  
Coarse Connection  
4.5x11x4.5, Porcelain, Porcelain Slip  
Casting Slip, ^6, Oxidation  
\$250.00



Melissa Bland  
Waltham, MA  
Shadow Vessel  
5x6.3x6.3, Brown Stoneware, ^10  
Reduction  
\$425.00



David Bolton  
Grayslake, IL  
Seigaiha Shippo Cups and Saucers  
5.5x7x7, Porcelain, ^12, Wood  
\$250.00



Irina Bondarenko  
Ann Arbor, MI  
Bowl (Tribute to Mariupol)  
4x5x5, Red Earthenware, ^6, Electric  
\$80.00



Tony Borchardt  
Saint Louis, MO  
Bourbon Set  
15x17x8, Brown Stoneware, ^10  
Reduction  
\$1,100.00



Bill Boulware  
Dowagiac, MI  
Altered Pitcher  
9.5x6.8x4, White Stoneware, ^6  
Oxidation, Electric  
\$225.00



Angel Brame  
Joplin, MO  
Save The Bees  
1.5x8x8, Stoneware, ^6, Electric  
Oxidation  
\$90.00



Jake Brodsky  
Alfred, NY  
Ovoid Rock Vase  
9x12x10, Stoneware, ^10, Wood  
\$250.00



Jeff Brown  
Seagrove, NC  
Hexagonal Woodfired Bottle  
7x5x4, Stoneware, ^11, Wood, Salt  
\$125.00



Bob Bruch  
Oberlin, OH  
Blue Ash Vase  
11x11x8, White Stoneware, ^6  
Oxidation  
\$675.00





Janet K. Burner  
Tucson, AZ  
"Velvet Impressions"  
7x5x3, Stoneware, Brown Stoneware  
^10, Gas, Oxidation  
\$200.00



Heidi McKay Casto  
Iowa City, IA  
A Flock of Feathers  
7x8.3x5.5, Porcelain, ^6, Oxidation  
Electric  
\$350.00



Heidi McKay Casto  
Iowa City, IA  
Beach Combers  
4x6x3.5, Porcelain, ^6, Electric  
Oxidation  
\$110.00



Hoyt Childers  
Newberry, FL  
Tall Vase: Barred Owl, the Watchers  
27x6.5x6.5, Stoneware, Porcelain, ^8  
Gas, Reduction  
\$475.00



Susan Cohen  
Alexandria, VA  
Neptune's World  
1.3x12.5x6, Stoneware, ^12, Anagama  
\$95.00



Jim Connell  
Rock Hill, SC  
Green Speckled Ewer  
12x7x5, Stoneware, ^10, Gas  
\$800.00



Bradford Davis  
Downingtown, PA  
Consider the Missing Pieces as Open  
Doors  
32x16x16, White Stoneware, ^9, ^13  
Wood  
\$1,200.00



Matthew Dercole  
West Hartford, CT  
Bowl and Saucer  
3.1x6.7x6, Porcelain, ^04, Electric  
\$175.00



Ben Eberle  
Conway, MA  
Jar  
11.5x9.5x9.5, White Stoneware, ^11  
Soda  
\$800.00



Lisa Ernst  
Jefferson City, MT  
Tricolored Heron Audubon Tribute  
1.5x15x15, Porcelain, ^10, Gas  
\$425.00



Stephen Fisher  
Caldwell, ID  
Vase  
8.5x6x3.3, Stoneware, ^5, Oxidation  
\$170.00



Mark & Huynh Mai Fitzgerald  
Dillsburg, PA  
Carved Bowl  
3.5x12.5x12.5, Stoneware, ^10  
Reduction  
\$150.00



Kevin Foy  
Glenview, IL  
Temoku Vase  
14x11x11, White Stoneware, ^10  
Reduction  
\$250.00



Forrest Sincoff Gard  
Athens, GA  
Mint and Peach (Fabware Mugs)  
4.5x4.5x3.5, Porcelain, Casting Slip, ^6  
Electric  
\$200.00



Tina Gebhart  
Gettysburg, PA  
Permutation Sequence Mugs  
5.5x24x4.5, Stoneware, ^10, Gas  
Reduction  
\$375.00



Denny Gerwin  
Charlotte, NC  
Grain Jar  
16x16x16, White Stoneware, ^12  
Anagama  
\$1,000.00



Josh Goering  
Fairway, KS  
Oil And Vinegar Set  
6x3x10, Wild North Carolina Clay and  
Slip, ^10, Reduction cool  
\$150.00



Christine Goh  
Bethesda, MD  
Harmony, Platter  
3x10.5x10.5, Stoneware, Porcelain Slip  
^10, Gas, Reduction, Soda  
\$170.00



Seth Green  
Fort Wayne, IN  
Teapot  
8x8x5, Stoneware, ^11, Wood  
\$225.00



Tracie Griffith Tso  
Reston, VA  
Koi/Golden Carp Lotus Wine Chiller  
13x6.5x5, White Stoneware, ^6  
Electric  
\$1,100.00



Brian Grow  
Falls Church, VA  
Push Pull Vase #47  
12x6x6, White Stoneware, ^10, Wood  
\$180.00



Kyle Guymon  
Bountiful, UT  
Movement Jar  
5.5x5.3x5.3, Porcelain, ^10, Reduction  
\$95.00



Phil Haralam  
Greensboro, NC  
Canna Lilly Jar  
13x8x8, Porcelain, ^7, Oxidation  
\$220.00



Thomas Harris  
Bloomington, IN  
Ikebana  
4x5x5, Stoneware, ^6, Electric  
\$95.00





Robert Helsel  
Indian Trail, NC  
Decanter #159  
9.5x6.8x4, Red Stoneware, Porcelain  
Slip, ^11, Wood  
\$225.00



Stephen Heywood  
Jacksonville, FL  
Smokestack Vase with Double Lidded  
Storage Jar  
13x11x5, Stoneware, ^10, Wood  
\$900.00



Kevin Hluch  
Frederick, MD  
Black Bottle  
14.5x8x8, Red Stoneware, Porcelain  
Slip, ^6, Electric, Oxidation  
\$250.00



Barbara L. Hoffman  
Denver, CO  
Ribbon Candy Set#1  
9x8.5x6.5, Porcelain, White Stoneware  
^10, Reduction, Soda  
\$450.00



Cindy Hoskisson  
Dallas, OR  
Stoneware Vase #2  
11x8x11, Stoneware, ^9, Oxidation  
\$140.00



Don Hoskisson  
Dallas, OR  
Stoneware Mug #3  
5.5x2.8x2.8, Stoneware, ^9, Oxidation  
\$80.00



Gene Hotaling  
Ocala, FL  
Triangle Box  
5x5x4, Stoneware, ^10, Reduction  
\$225.00



Kevin W. Hughes  
Springfield, MO  
Textural Bowl  
4x8x8, Brown Stoneware, ^12, Wood  
\$150.00



Lynn Isaacson  
Pine Bush, NY  
Aardvark Black Mountain Plate 1  
3x10.8x10.8, Black Stoneware, ^11  
Salt  
\$550.00



Shari Jacobs  
Woodberry Forest, VA  
Cake Stand  
7x10x10, Stoneware, ^10, Gas  
Reduction, Soda  
\$175.00



Shikha Joshi  
Round Rock, TX  
Earthy Teabowl with Mesquite Base  
4x13x6, Mid Fired Black Clay, ^6  
Electric  
\$175.00



Denise Joyal  
Smithsburg, MD  
Summer Teabowl  
3x5x5, Porcelain, ^13, Anagama, Soda  
\$125.00



Jennifer S. Kaplan  
West Palm Beach, FL  
Unfurling  
13x9x9, Porcelain, ^10, Soda  
\$1,200.00



Melody Knowles  
Carthage, MO  
Vase with Grasses  
16x9x7, Porcelain, ^10, Gas Reduction  
\$375.00



Lucien Koonce  
Haydenville, MA  
Sushi Tray  
2x12.5x5.3, White Stoneware, ^9  
Oxidation  
\$485.00



Steve Loucks  
Wellington, AL  
Combo Jar  
7x9.5x5, White Stoneware, ^10, Gas  
Reduction  
\$125.00



Laurel Lukaszewski  
University Park, MD  
Sunken Treasure Lidded Jar  
6x5.3x5.3, Porcelain, ^6, Electric  
\$850.00



Wade F. MacDonald  
Birmingham, AL  
Dueling Vases No.1  
6x5x5, Casting Slip, ^5, Electric  
\$700.00



Josh Manning  
Copper Hill, VA  
Yellow Teapot  
9x10x6, Porcelain, White Stoneware  
^10, Gas, Reduction  
\$150.00



Tamera Martinez  
Boonsboro, MD  
Pitcher  
8x4.5x3.5, White Stoneware, ^11  
Anagama, Reduction, Soda, Wood  
\$125.00



Alexa McAdams  
Clearwater, MN  
Sad Dinner  
4x4.5x4.5, Porcelain, ^10, Reduction  
\$65.00



Ryan McDonnell  
Crofton, MD  
Carved Tea Bowl  
5x6x6, Porcelain, ^10, Soda  
\$250.00



Bob McWilliams  
Waialua, HI  
Chawan '20  
4x4x4, White Stoneware, ^10, Gas  
Reduction  
\$350.00



Courtney Michaud  
Tyrone, NM  
Golden Hour Tumbler Set  
8x10x10, Porcelain, ^9, Oxidation  
\$320.00





Lee Middleman  
Portola Valley, CA  
Bronze Crater Vase  
8x8x5, White Stoneware, ^6, Electric  
\$250.00



Brooke S. Millecchia  
Fairport, NY  
Finger Painted Box  
8x6x7, White Stoneware, ^6, Electric  
\$150.00



Polina Miller  
Burke, VA  
Double Walled Vase  
7.5x7x7, Brown Stoneware, ^7, Electric  
\$125.00



Abigail Milner  
Baltimore, MD  
Black Tea Set  
5.5x4x7.5, Stoneware, ^10, Wood  
\$250.00



Susan Feller Mollet  
Dallas, TX  
Selfie  
11x8x4, Stoneware, ^10, Reduction  
\$500.00



Ayla Murray  
Logan, UT  
Teapot and Storage Jar  
6x10x6, Red Stoneware, ^8, Wood  
Reduction  
\$170.00



Kate Shakeshaft Murray  
Gainesville, FL  
Tied-Down Tiger Jar  
6x6x6, Stoneware, ^10, Gas  
\$200.00



Carey Nathanson  
Wilmington, NC  
BGP Yooey  
3x3.5x3, Porcelain, ^13, Wood  
\$120.00



Samuel Newman  
Portland, OR  
Cosmic Milk Maker's Pitcher  
10x5x5, White Earthenware, ^11  
Reduction, Wood, Soda  
\$295.00



Kirsten Olson  
Carlisle, PA  
Golden Paankaq (Jar)  
8.5x7x7, Porcelain, ^10, Oxidation  
\$225.00



Eric Ordway  
Columbia, MO  
Red Jar  
6x5.5x5, White Stoneware, ^11, Wood  
\$160.00



Reid Ozaki  
Tacoma, WA  
Gourd Vase  
14x7x7, Porcelaneous Stoneware, ^10  
Reduction, Soda, Gas  
\$350.00



Kate Pak  
Decatur, GA  
Submission 1  
9.8x2.8x2.8, Porcelain, ^6, Soda  
\$195.00



Elizabeth Paley  
Durham, NC  
Swoosh Vase  
8x8.3x8.3, Stoneware, ^6, Electric  
Oxidation  
\$210.00



Wenfen Pan  
Okemos, MI  
Teapot  
5.5x7x4, White Stoneware, ^10, Gas  
Reduction  
\$200.00



Carter Pasma  
Logan, UT  
Squared Pitcher  
8.5x5.3x5, Stoneware, ^10, Soda  
\$110.00



Carolyn Dahl and Thomas Perry  
Houston, TX  
Petal Meditation  
1.3x14x14, White Stoneware, ^9,  
Electric  
\$300.00



Jarred Pfeiffer  
La Crosse, WI  
Skirted Teapot  
12x7x6, Stoneware, Porcelain Slip  
^11, Wood, Reduction  
\$115.00



Nathaniel Lafayette Poulos  
Reading, PA  
Homage To Munch  
18x9x9, Porcelain, ^9, Wood, Anagama  
\$900.00



Carla Dickey Prinster  
Tucson, AZ  
Lady Bug  
15x13.5x6.5, Porcelain, ^6, Electric  
\$350.00



Alex Psillos  
Chester, CT  
Pouring Pot  
7x7x7, Brown Stoneware, ^10, Electric  
\$125.00



Charlene A. Randolph  
Stewartstown, PA  
Miss Melon-ee Teapot  
12x10.5x7, White Stoneware, ^6  
Electric  
\$295.00



John Reinking  
Pittstown, NJ  
Bottle  
8x5x5, Stoneware, ^13, Anagama  
Reduction, Wood  
\$400.00



Don Reynolds  
Bridgeport, CT  
Painted Bowl  
2.5x7.3x7.3, Porcelain, ^6, Electric  
Oxidation  
\$85.00





Colleen Riley  
Farmington, MN  
Jar with Turquoise Bird  
8x6x6, White Stoneware, ^10, Gas  
\$150.00



Julian Rohn-Capellaro  
Asheville, NC  
Indented Bottle  
10x4x4, Porcelain, ^10, Salt, Reduction  
\$150.00



Mat Rude  
Spokane, WA  
64oz Growler with Screw Top Lid  
10x6x6, Casting Slip, ^10, Salt  
\$275.00



David Rummel  
Bowling Green, OH  
Wood-Fired Altered Vase  
10x7x4.5 Stoneware, ^10, Anagama  
\$100.00



Tania Rustage  
Lone Tree, CO  
Whimsical Pelican Beak Pitcher  
6.5x7x5, Stoneware, ^5  
Oxidation, Electric  
\$90.00



Eileen Sackman  
Stony Point, NY  
Temptation - After Bruegel Plate  
2x6x6, Stoneware, ^11, Anagama  
\$400.00



Shana Salaff  
Fort Collins, CO  
Constructed Vase  
6x6x3, Porcelaneous Stoneware, ^5  
Oxidation  
\$125.00



Mary Ellen Salmon  
Trumansburg, NY  
Dinner, Lunch and a Snackerel  
7x4x7, Stoneware, ^6, Electric  
\$558.00



Catherine Satterlee  
Washington, DC  
Anna Bottle  
12x8x2.5, Stoneware, ^6, Electric  
\$450.00



Alexandra Saunders  
Baton Rouge, LA  
Yellow Vertical Jar  
19x7x7, Red Earthenware, ^04  
Electric  
\$220.00



Jan Schachter  
Portola Valley, CA  
Woven Platter  
1.8x5.3x13.5, Stoneware, ^10, Gas  
Reduction  
\$300.00



Amy Schnitzer  
New York, NY  
Wood Fired Bowl  
5x10x10, White Stoneware, ^12, Wood  
\$175.00



Josh Scott  
Neptune Beach, FL  
Ewer  
7.5x5x5, Stoneware, ^10, Wood  
\$220.00



Sam Scott  
Shoreline, WA  
Brushwork Bottleneck Vase  
9.5x8x8, Porcelain, ^11, Gas Reduction  
\$500.00



Allison Coles Severance  
Cascade, MD  
Storage Jar  
2x5.5x5.5, Porcelain, Brown  
Stoneware, ^11, Wood, Salt  
\$90.00



Kailey Shakerin  
Metairie, LA  
Icosahedron Box  
4.5x4.5x4.5, Stoneware, ^6, Electric  
\$280.00



Tim Sherman  
Smithsburg, MD  
Pitcher  
15x7.5x7.5, White Stoneware, ^11  
Wood, Anagama  
\$150.00



Alexis Shockey  
Waynesboro, PA  
Watercolor Flowers Mug  
4.5x4.5x3.3, Stoneware, ^6, Electric  
\$75.00



Ian Stainton  
Spring Mills, PA  
Lidded jar  
10x9x9, Porcelain, ^10, Salt  
\$500.00



Dianne & Tom Starr  
Hanover, PA  
Orbits - Ode to Harrison McIntosh (set of 3)  
6x4.3x4.3, Stoneware, ^10, Reduction  
\$225.00



Natalie Steinmetz  
Chicago, IL  
Freestyle  
20x6x6, Brown Stoneware, ^018, ^5  
Oxidation, Electric  
\$250.00



Natalie Steinmetz  
Chicago, IL  
Striped Vases  
15x9x5, White Stoneware, Brown  
Stoneware, ^5, Oxidation  
\$175.00



Rebecca Stevens  
Saint Petersburg, FL  
Woodland Tea Party  
8.5x12x7.5, Porcelain, ^6, Electric  
\$1,200.00



Timothy Sullivan  
Marietta, GA  
Vase with Lid  
11x8x8, Porcelain, White Stoneware  
^10, Gas, Reduction, Electric  
Oxidation  
\$595.00





Sutherland Santo  
Los Angeles, CA  
Jewel Tumbler (Purple)  
4.3x3x3, Porcelain, ^6, Electric  
\$80.00



Chance Taylor  
Columbia, MO  
Store Jar  
12x8x8, Stoneware, ^12, Wood  
\$150.00



James Tingey  
Wellsville, NY  
Condom-Mint Boxes  
5x11x5, Stoneware, ^10, Wood  
\$180.00



Raymond Trandell-Smoke  
Placentia, CA  
Graffiti Cup  
4.3x3x3.8, White Stoneware, ^6  
Oxidation  
\$65.00



Lynn Anne Verbeck  
West Decatur, PA  
Tulip Vase  
5x5x5, Stoneware, ^11, Anagama  
\$95.00



Renata Wadsworth  
Spencer, NY  
Teapot with mugs  
6.5x9x7, Porcelain, ^11, Gas Reduction  
\$285.00



Veronica Watkins  
Maryville, MO  
Covered Tray B  
5x8x7, Red Stoneware, ^5, Electric  
Oxidation  
\$295.00



Lars Westby  
Annapolis, MD  
Quatrefoil Platter  
18x18x2, Red Earthenware, ^04  
Electric  
\$225.00



Regina Wickham  
Cambridge, NY  
Waxed Shino Bowl  
4x13x13, Stoneware, ^10  
Gas Reduction  
\$250.00



Stephanie M. Wilhelm  
West Chester, PA  
Floral Winged Vase  
17x10x8, Porcelain, ^6, Oxidation  
\$550.00



Erik Wilson  
Medford, MA  
Slip Inlay Yunomi  
4.3x3x3, Red Stoneware, ^10  
Gas Reduction  
\$65.00



Tara Wilson  
Montana City, MT  
Basket  
11.3x7x4, White Stoneware, ^11, Wood  
\$450.00



Dale Wolfield  
Port Ewen, NY  
Bee Bowl  
3.8x11x11, White Stoneware, ^6  
Oxidation, Electric  
\$1,200.00



Matthew Wren  
Phoenixville, PA  
Faces Vase  
15.5x7x7, Stoneware, ^10, Reduction  
\$400.00



Meghan Yarnell  
Perrysburg, OH  
Origami Crane Jar  
3.5x5x4, Porcelain, ^6, Electric  
\$70.00



Mark Zellers  
Pascoag, RI  
Branch Vase E  
17x4x4, Stoneware, ^10, Wood  
\$600.00



Ping Zhong  
Lawrenceville, NJ  
Teapot  
11x8x6.5, White Stoneware, ^6  
Electric  
\$500.00



Colleen Zufelt  
Wilmington, DE  
Black White Elliptical Bowl  
6x12x6, White Earthenware, ^04  
Electric, Oxidation  
\$245.00



Lancaster Museum of Art, Lancaster, PA  
Reception: September 16, 2022  
Exhibition: September 17 - November 5, 2022  
Presented by the Lancaster Creative Factory  
See this year's show and past shows online at  
[www.strictlyfunctionalpottery.net](http://www.strictlyfunctionalpottery.net)  
Join us on Facebook  
Fans of Strictly Functional Pottery National®



David Bolton - Grayslake, IL



Melissa Bland - Waltham, MA



Eileen Sackman - Stony Point, NY



Mary Ellen Salmon - Trumansburg, NY