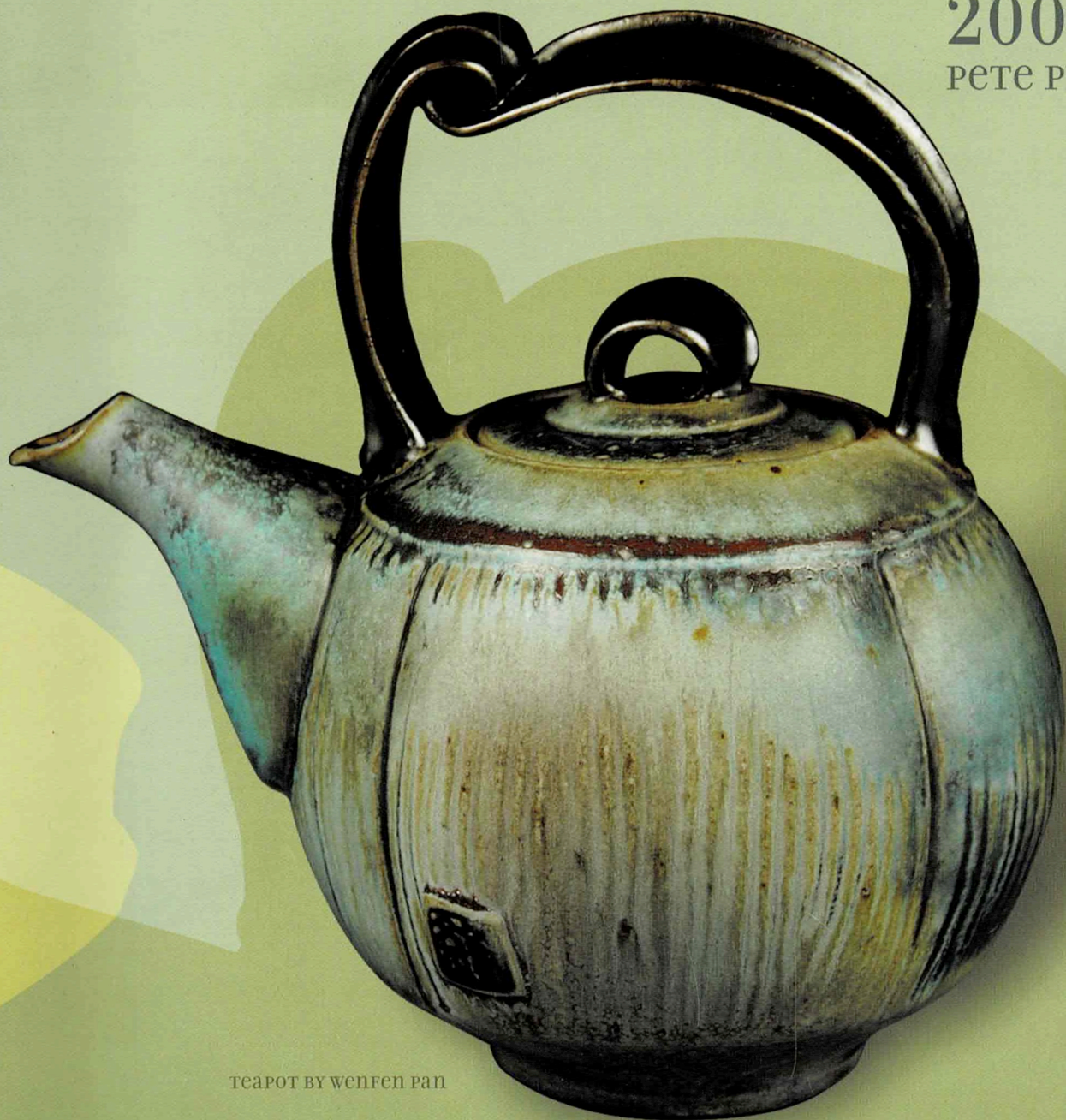


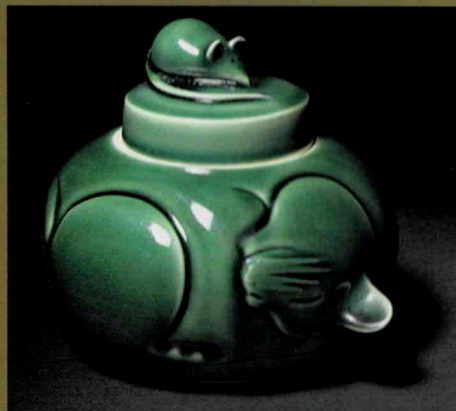
17<sup>TH</sup> ANNUAL STRICTLY FUNCTIONAL POTTERY NATIONAL<sup>®</sup>

2009 JUROR,  
PETE PINNELL



TEAPOT BY WENFEN PAN

THE BEST IN CONTEMPORARY



FRONT cover

Wenfen Pan  
pg 21

BACK cover

Upper Left  
Jim Connell  
pg 11

Upper Right  
Jennifer Wankoff  
pg 25

Lower Left  
Susan Dewsnap  
pg 12

Lower Right  
Scott Cooper  
pg 12

INSIDE

FRONT cover

Top Left  
Stephen Heywood  
pg 15

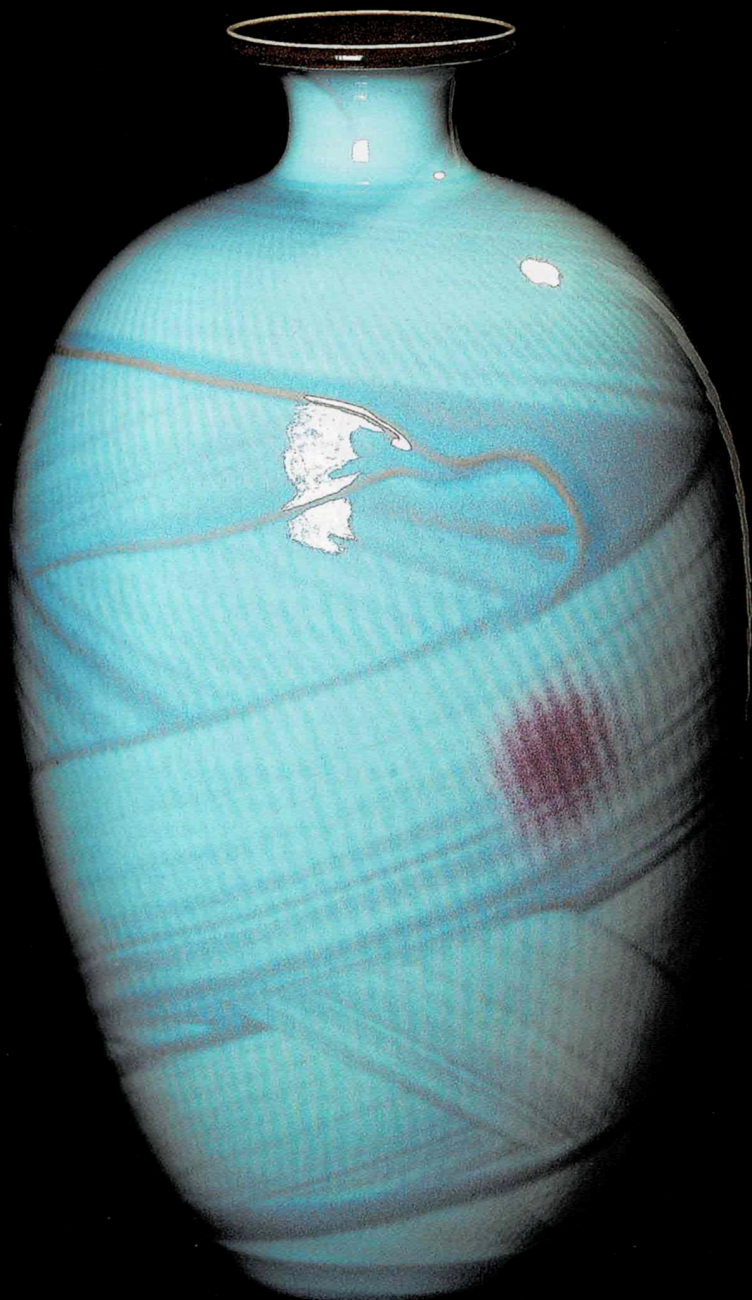
Top Right  
Deborah Shapiro  
pg 23

Bottom Left  
Gay Smith  
pg 24



CATALOG DESIGN

JOANNE CASSARO DESIGN



# 17<sup>TH</sup> ANNUAL

## STRICTLY FUNCTIONAL POTTERY NATIONAL<sup>®</sup>

2009 JUROR,  
PETE PINNELL  
JOINS THE HALL OF FAME

LINDA ARBUCKLE	2008
MALCOLM DAVIS	2007
TOM COLEMAN	2006
JOHN GLICK	2005
SUSAN PETERSON	2004
WAYNE HIGBY	2003
JACK TROY	2002
LINDA CHRISTIANSON	2001
KEN FERGUSON	2000
WARREN MACKENZIE	1999
CYNTHIA BRINGLE	1998
VAL CUSHING	1997
PHYLLIS BLAIR CLARK	1996
CHRIS STALEY	1995
BILL DALEY	1994
JACK TROY	1993

**I**t is an enormous honor to be asked to jury the Strictly Functional Pottery National. The previous jurors for this exhibition are among the most important artists and teachers in American Ceramics, and the SFPN is one of the preeminent ceramics exhibitions in the country, so it is humbling to be asked to take part. As a juror, it's also the artistic equivalent of running the marathon. I've done a fair amount of exhibition jurying in the past, but nothing with this many applicants. In all, there were 1,152 entries from 514 artists, which I had to whittle down to just

108 objects. To put this into perspective, if I spent just 30 seconds looking at each entry, it would take almost 10 hours to look at everything just once (but only if I took no breaks in the process). To fairly jury a show, it takes a lot more than just 30 seconds per entry, and I had to go back over the same objects over and over, slowly weeding the images until I reached the final goal. It was a task that was equal parts pleasure and pain. It was pleasurable- and fascinating- to be able to see so many excellent examples of ceramic art. It was also painful because of the sheer amount of time it required (my rear end will be sore for awhile) and the difficulty cutting out some very beautiful pieces.

I took the name of the exhibition very seriously. This show is not called The Pottery National, which would allow a broader range of approaches to the idea of pottery. It is also not called the Functional Pottery National. It is the Strictly Functional Pottery National, and I took the title as one of the guides for making my decisions. I don't think this is the right show for a raku teapot, no matter how beautiful that pot may be (since it's obvious that a raku teapot cannot hold tea). I also excluded some beautiful cups that appeared

  
 "Function provides  
 a way for us to also  
 appreciate these objects  
 for their tactile and  
 experiential qualities,  
 and to accept them  
 as intimate partners  
 in our lives."

impossible to drink from, as well as some jars (one exquisitely beautiful) that appeared capable of holding only our attention. On the other hand, I'm willing - in fact, interested - in challenging our notions about what can be functional or not, and some of the pieces admitted into the show will definitely raise some eyebrows. There are no bright lines separating functional from non-functional, and it's fun to explore the territory that separates the two.

I don't think of function as a destination, but as a very powerful vehicle that allows the artist to transport us to some other destination. If function were the sole goal of our work, then all of these entries would have tended

to look like plastic travel mugs (or their ceramic equivalent). It's obvious from even a cursory look at the entries that most of these objects exist for reasons that go far beyond the mechanical needs of eating, drinking and serving food, to the aesthetic and sensual pleasures that we derive from these acts. You don't have to watch *The Food Network* to know that what humans derive from food goes far beyond physical sustenance. And, of course, functional pottery can play a role in our lives outside the kitchen, as well.

Function is the tool that allows a work of art to play an active role in the events and processes of our lives. Function pushes art out of the role of critic and outsider, and into the role of participant and insider. As viewers, we expect art to provide us with a strong visual and intellectual experience. Function provides a way for us to also appreciate these objects for their tactile and experiential qualities, and to accept them as intimate partners in our lives. Function allows art to stop being passive, and begin being active. As a juror, I needed to evaluate each object's visual qualities, and to also imagine that object in the hand, in use and within a life.

This was a blind jurying: there were no names or other details to sway me. I simply evaluated the entries based on their titles, descriptions and what I could see in the image (and, I'm sure, disappointed some friends in the process). I also chose to follow the wishes of the organizers and accept no more than one entry from an artist. This was hard to do, since the best artists sometimes entered three fantastic objects, and I had a hard time deciding which to select. In the end, I agree that accepting just one entry per person resulted in a broader, more encompassing show that showcases a wider range of approaches to the idea of functional pottery.

Right  
 Pete Pinnell,  
 Teapot

The objects that I selected reflect the strongly heterogeneous nature of contemporary ceramics. Some are traditional, while others seem interested in pushing our sensibilities. Some are quiet, humble and unassuming, while others are loud, flamboyant, celebratory, or playful. Some appear to be casually – even crudely – made, while others speak of the enormous artistry and experience required to produce them. Technically speaking, the objects in this show represent virtually every ceramic material, forming process and firing process in use by ceramic artists today. It is a nice representative slice of contemporary utilitarian pottery, and I think that anyone who enjoys pots will find many objects to like in this exhibition.

To all of you who entered work in this show, thank you – both for making pots, and for having the courage to put them out there in the public eye. If you didn't get a piece into the show, please don't let that discourage you. There were an enormous number of entries, and I had only limited information from which to make my choices. If I were able to see the entries in person and to touch and hold them, I would probably pick (at least) a slightly different show. Photographs are limiting, and I had to make my decisions based on what appeared on my computer screen. I hope you enjoy the show, regardless of whether your work appears in it, and I hope you continue to find joy and satisfaction in the making of art.

– Pete Pinnell, July, 2009





SFPN Co-Directors,  
Jean Lehman and Kevin Lehman



The Market House Craft Center is very proud to bring the Strictly Functional Pottery National to Lancaster for its 17th year. This exhibition was the first to provide a venue for sharing what is happening in American functional ceramics. The SFPN continues to draw the best in contemporary functional ceramics. Each year we see new and creative ways of interpreting utilitarian works. The exhibit will continue to be available on our website, along with the past four exhibits. ([www.strictlyfunctionalpottery.com](http://www.strictlyfunctionalpottery.com))

Each year a highly respected artist in the ceramics field is invited to be juror for the SFPN. This year we are honored to have **Pete Pinnell**, Professor of Art at University of Nebraska. He is well known as a ceramist, teacher, lecturer, author, and juror. His work in clay has been shown in numerous books and journals,

and is represented in museums and collections internationally.

Mr. Pinnell took on the monumental task of selecting pieces for the exhibit. It is a "blind jury" which means the juror is not given the names of the applicants. We send the juror the digital images, and supply the title, size, clay, and firing for each piece. Our instructions are to keep in mind the "Strictly Functional" part of the title, and select a balanced exhibit, featuring different methods, clays, glazes, and firing. A piece may focus on form, color, or texture, or it may express an idea. Because of the need for a balanced exhibition, unfortunately there are many excellent pieces that do not get selected for the show. We received applications from almost every state, and as usual, about a third of the exhibit is from people who have not applied before. We have

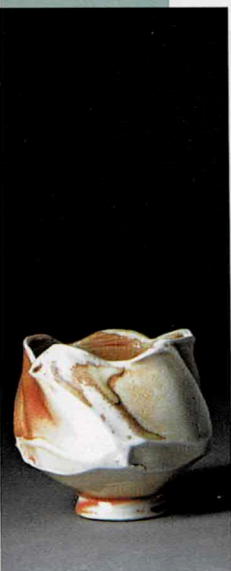
one person who has been in 16 of the 17 years, and we have several people who have never applied to any exhibit before.

The *Strictly Functional Pottery National* is a joy for us to work on, and we are pleased to do it. The payoff is the joy of unpacking the pieces and finally seeing the exhibit come together into a cohesive whole. There is a tremendous amount of work behind the scenes, but it is a group effort. We are all volunteers, and without many committed people, our sponsors and our supporters, it could not be done. Enjoy!

*Jean Lehman and Kevin Lehman  
(not related)*

*Co-Directors  
Strictly Functional  
Pottery National®*

| Left  
Susan McHenry  
pg 20  
| Top right  
Nan Coffin  
pg 11





MARKET HOUSE CRAFT CENTER IS CELEBRATING 17 YEARS PRESENTING STRICTLY FUNCTIONAL POTTERY NATIONAL®

MARKET HOUSE CRAFT CENTER  
PO Box 204,  
EAST PETERSBURG, PA 17520-0204  
717-560-8816

The organization was founded in 1946 as the Conestoga Valley Chapter of the PA Guild of Craftsmen. In 1988, it was reorganized into two separate organizations: The Market House Craft Center and Lancaster Designer Craftsmen. The MHCC is a nonprofit [IRS 501(c)3] educational organization whose mission is the encouragement, education and promotion of quality crafts and craftsmanship. Lancaster Designer Craftsmen is an [IRS 501(c)6] organization which is a membership organization for about 150 craftspeople and friends.

The purpose of this organization is to encourage and promote Pennsylvania crafts and craftsmen. The MHCC and LDC are totally volunteer organizations. Sixty volunteers work many, many hours to make the *Strictly Functional Pottery National*® a success every year. Without these dedicated volunteers, the MHCC would not be able to present an exhibit of such a magnitude.



OPENING RECEPTION  
FRIDAY, SEPTEMBER 25, 2009  
6PM - 8PM

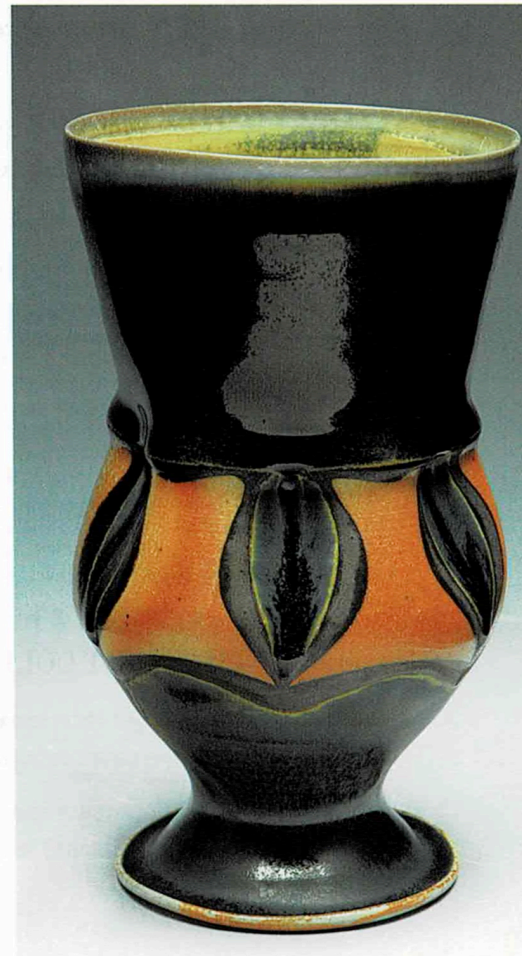
**Show Dates:**

**Saturday, September 26 through  
Sunday, October 25, 2009**

**HOURS:** MON-FRI / 10AM - 5PM  
SAT / 10AM - 4PM  
SUN / 12PM - 4PM

**Kevin Lehman's Pottery**  
560 South Prince Street  
Lancaster, PA 17603  
717.509.7547  
kevin@klpottery.com  
www.klpottery.com

This is the second time SFPN will be held at Kevin Lehman's Pottery in historic downtown Lancaster. The studio, a 13,000 square foot warehouse, at 560 South Prince Street in Lancaster, PA once was the former *Posey Iron Works*. The present facility allows ample room for exhibitions, teaching classes, holding workshops and engaging in clay projects, large and small. Kevin Lehman's Pottery offers studio spaces and residencies that provide opportunities for teaching and a venue for showroom sales. Kevin has focused considerable attention to large works of pottery: colossal jars, tile fireplaces, grand wall decor and large exterior sculptures.



Above  
Bethany Benson  
pg 10

**BEST OF SHOW**

**Lancaster Designer Craftsmen**

**FIRST PLACE**

**Standard Ceramic Supply Co.**

**SECOND PLACE**

**Laguna Clay Co.**

AWARD FOR INNOVATION

**PA Guild of Craftsmen**

BEST THROWN AND ALTERED AWARD

**Bailey Pottery Equipment Corp.**

BEST HANDBUILT AWARD

**AMACO - American Art Clay Co.**

BEST TEAPOT

**Kevin Lehman's Pottery**

POTTER'S GROUP AWARD\*

**Central PA Potter's Group**

HACC STUDENT AWARD\*

**Harrisburg Area Community College, Ceramics Club**

POCONO CHOICE AWARD\*

**Pocono Chapter, PA Guild of Craftsmen**

ATTORNEY'S AWARD\*

**Zimmerman, Pfannebecker, Nuffort & Albert, LLP**

FOUNDER'S AWARD\*

**Scott Jones, Founder of the SFPN**

DIRECTOR'S AWARD FOR FORM & FUNCTION\*

**Jean B. Lehman, Co-Director of the SFPN**

PEOPLE'S CHOICE AWARD

**Winner determined by attendee ballot**

*(results announced October, 25<sup>th</sup>)*

2009 SFPN | permanent collection acquisitions

Pieces will become part of the following permanent collections:

**Bailey Pottery Equipment Corp.**

**Ceramics Monthly**

**Clay Times**

**L&L Kiln Manufacturing, Inc.**

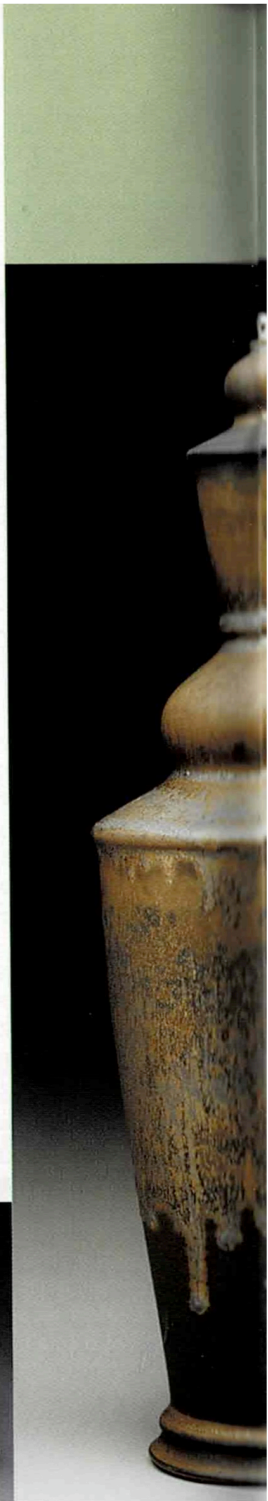
**Skutt Ceramic Products**

Lower Left  
KyoungHwa Oh  
pg 21

Middle  
Seth Green  
pg 15

Lower Right  
John K. Oles  
pg 21

\*Awards selected by the award sponsors. All others selected by Pete Pinnell.





The 2009 Strictly Functional Pottery National® exhibition is grateful  
for the generous support of the following donors.

2009 SFPN VISIONARIES

Bailey Pottery Equipment Corporation 🍷 Market House Craft Center  
Lancaster Designer Craftsmen 🍷 Standard Ceramic Supply Company

2009 SFPN PATRONS

AMACO - American Art Clay Co. 🍷 Central PA Potter's Group 🍷 Ceramics Monthly 🍷 Clay Times  
Harrisburg Area Community College, Ceramics Club  
Jean B. Lehman 🍷 Joanne Cassaro Design  
Karen Peiffer Catering 🍷 Kevin Lehman's Pottery 🍷 Laguna Clay Co.  
L&L Kiln Manufacturing, Inc. 🍷 Pennsylvania Guild of Craftsmen  
Pocono Chapter, PA Guild of Craftsmen 🍷 Skutt Ceramic Products  
Zimmerman, Pfannebecker, Nuffort & Albert, LLP

2009 SFPN FRIENDS

Anonymous 🍷 Brookshire Printing, Inc. 🍷 Clayworks Supplies  
Millersville University Clay Students 🍷 Red Raven Art Company 🍷 Patricia Mortenson 🍷 Scott Jones  
Pegge Shannon 🍷 Windsor Chair Shop of Lancaster County

SFPN encourages you to support the rich history of this show,  
the education of functional ceramic design and craftsmanship.  
If you would like to support SFPN, we support you!  
Visit our website for more information in becoming a donor.



# THE SHOW





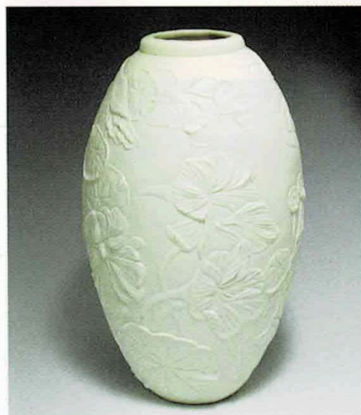
**Jake Allee**  
Grand Junction, CO  
Hex Tea Pot  
8x7x8" / Porcelain; <sup>A</sup>10 soda  
\$250



**Marion Angelica**  
Minneapolis, MN  
Foursquare Platter  
1x10x10" / Porcelain; <sup>A</sup>10 reduction  
\$300



**Aaron Anslow**  
Washington, PA  
Scraped Tea Bowl  
4x4x4" / Stoneware; <sup>A</sup>10 reduction  
\$60



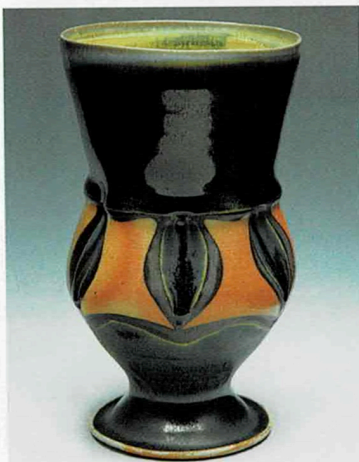
**JoAnn Axford**  
Glenmont, NY  
Nasturtium Vase  
9x5x5" / Unglazed Porcelain; <sup>A</sup>6 electric  
\$300



**Posey Bacopoulos**  
New York, NY  
Oil and Vinegar Ewers  
6x12x5" / Terra cotta; <sup>A</sup>04 electric  
\$185



**Marc J. Barr**  
Murfreesboro, TN  
Pair of Covered Cups  
6x3x3" ea. / Stoneware; <sup>A</sup>05 oxidation  
\$200



**Bethany Benson**  
 Huntingdon, PA  
 Blue Cup  
 6x4x4" / Stoneware;  $\Delta$ 10 soda, reduction  
 \$75



**David Beumée**  
 Lafayette, CO  
 Vase  
 13x8x8" / Porcelain;  $\Delta$ 10 reduction  
 \$375



**Nicholas Bivins**  
 Athens, OH  
 Toasting Cups  
 7x10x8" / Porcelain;  $\Delta$ 10 oxidation  
 \$350



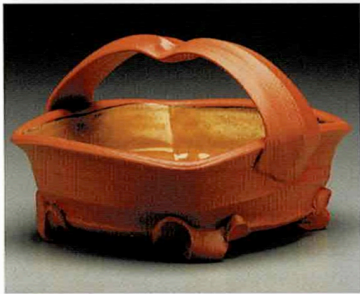
**Doug Blechner**  
 San Pedro, CA  
 Vase  
 10x5x5" / Stoneware;  $\Delta$ 10 reduction  
 \$140



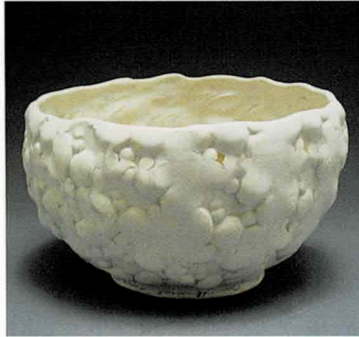
**Birdie Boone**  
 Helena, MT  
 Flower Vase with Bowl  
 9x10x10" / Midrange redware; oxidation  
 \$200



**Jenni Brant**  
 Lincoln, NE  
 Egg Server with Dish  
 10x11x11" / Porcelain; electric  $\Delta$ 6 oxidation,  
 $\Delta$ 018 luster  
 \$450



**Lisa Buck**  
Afton, MN  
Truffle Basket  
5x7x8" / Earthenware; <sup>A</sup>04 electric  
\$95



**Jessica Caccamo**  
Ballston Lake, NY  
White Glacier Bowl  
5x7x7" / Porcelain; <sup>A</sup>10 oxidation  
\$60



**Autumn Cipala**  
Lincoln, NE  
Serving Set  
7x14x14" / Porcelain; <sup>A</sup>10 oxidation  
\$600



**Nan Coffin**  
San Diego, CA  
Rectangular Baker  
5x7x12" / Stoneware; reduction  
\$150



**Elizabeth Cohen**  
Wellesley, MA  
Belted Vase  
4x5x9" / Porcelain; <sup>A</sup>6 oxidation  
\$120



**Jim Connell**  
Rock Hill, SC  
Red Blue Nesting Bowls  
4x12x12" / Porcelain; <sup>A</sup>10 reduction  
\$400



**Scott Cooper**  
Fillmore, IN  
Copper Lidded Jar  
5x4x4" / Stoneware; <sup>A</sup>10 salt, soda  
\$85



**Julie Crosby**  
Trumansburg, NY  
Serving Bowl  
4x8x8" / Stoneware; woodfired  
\$185



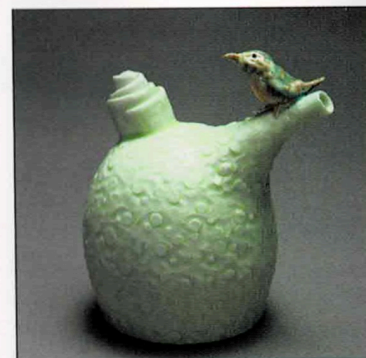
**Angela Cunningham**  
Somerville, MA  
Spiky Nesting Set  
3x8x8" / Stoneware; <sup>A</sup>10 oxidation  
\$440



**Janine Davis**  
Mercersburg, PA  
Fish Platter  
1x19x8" / Stoneware; <sup>A</sup>6 oxidation  
\$110



**Susan Dewsnap**  
Lincoln, NE  
Small Plate Set  
1x8x8" / Stoneware; <sup>A</sup>9 Soda  
\$140



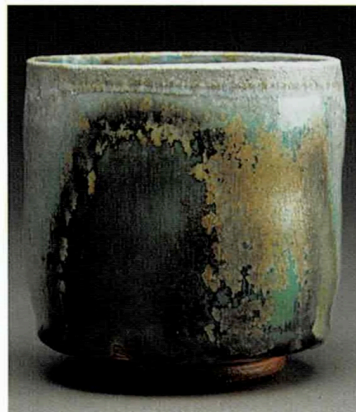
**Lucy V. Dierks**  
Norfolk, VA  
Soy Bottle with Robin  
4x4x2" / Porcelain; <sup>A</sup>7 electric  
\$75



**Jim Dugan**  
 Baltimore, MD  
 Pitcher and Mug Set  
 10x12x5" / Stoneware; woodfired  
 \$165



**Jason Dunn**  
 Oakland, CA  
 Ewer  
 9x6x4" / Stoneware; anagama woodfired  
 \$220



**Jimmy Eddings**  
 Atchison, KS  
 Untitled Cup  
 4x4x4" / Stoneware; anagama  
 \$50



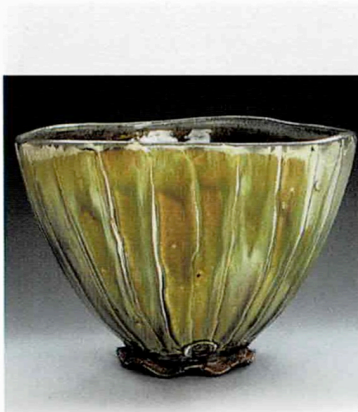
**Randy Edmonson**  
 Farmville, VA  
 Vase  
 12x5x5" / Stoneware; salt  
 \$250



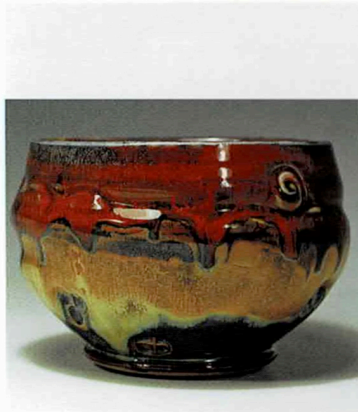
**Lisa Ernst**  
 Jefferson City, MT  
 Cottonwood Jar  
 7x7x6" / Porcelain; #10 reduction  
 \$150



**Sharon Farrelly**  
 Chattanooga, TN  
 Slant Square Plate Set  
 2x10x9" / Slipcast Porcelain; #6 oxidation  
 \$105



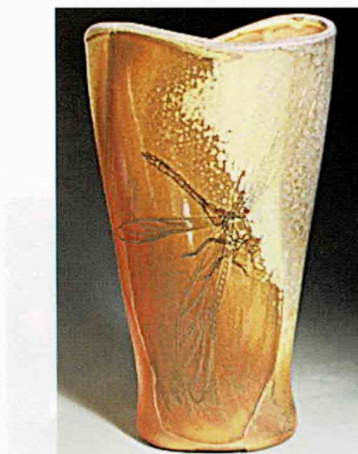
**Edward Feldman**  
Syracuse, NY  
Lily Bowl  
7x9x9" / Stoneware, porcelain slip; soda  
\$150



**Scott Frankenberger**  
West Lafayette, IN  
Tornado Bowl  
4x5x5" / Porcelain; #8 reduction  
\$95



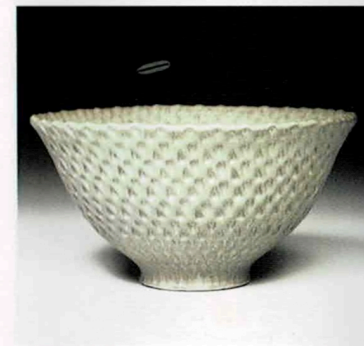
**Joyce M. Fujiwara**  
San Francisco, CA  
Carbon Trap Cruet Set  
5x8x4" / Porcelain; reduction  
\$350



**Colleen Gallagher**  
Shelton, WA  
Vase with Dragonfly  
11x6x3" / Porcelaneous stoneware;  
woodfired  
\$300



**Tina Gebhart**  
Berea, KY  
Lobed Teapot  
6x8x5" / Porcelain; #10 salt  
\$250



**Ernest Gentry**  
Logan, UT  
Bowl  
3x6x6" / Stoneware; #6 gas, reduction cooled  
\$120

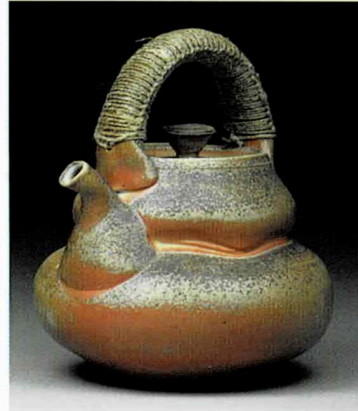




**Seth Green**  
Helena, MT  
Ritual Bottle  
17x6x6" / Stoneware; reduction  
\$400



**Ryan J. Greenheck**  
Philadelphia, PA  
Teapot  
6x10x7" / Porcelain;  $\Delta$ 10 electric  
\$225



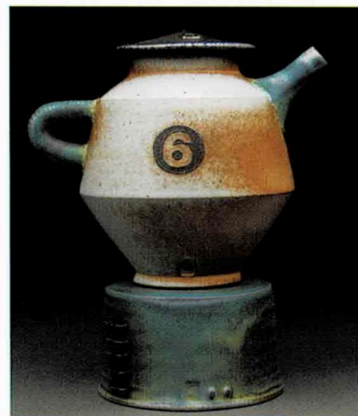
**Perry Haas**  
Geneva, IL  
Teapot  
6x5x4" / Porcelain;  $\Delta$ 12 woodfired  
\$300



**Greg Jahn & Nancy Halter**  
Billings, MT  
Shino Hut  
5x5x5" / Porcelain;  $\Delta$ 10 reduction  
\$200



**Jennifer Bernhard Hatfield**  
Frederick, MD  
Teapot  
6x7x2" / Earthenware; electric  
\$180



**Stephen Heywood**  
Jacksonville, FL  
Teapot with Base  
8x7x5" / Stoneware; soda  
\$300



**Matthew Hyleck**  
 Baltimore, MD  
 Field Dinner Plate -set of 4  
 2x10x10" / Stoneware; <sup>+</sup>10 reduction  
 \$360



**Erica Iman**  
 Edwardsville, IL  
 Sitting Mug  
 3x5x4" / Stoneware; woodfired  
 \$65



**Mike Jabbur**  
 Santa Fe, NM  
 Shot Set with Pourer  
 6x6x5" / Porcelain; gas reduction  
 \$375



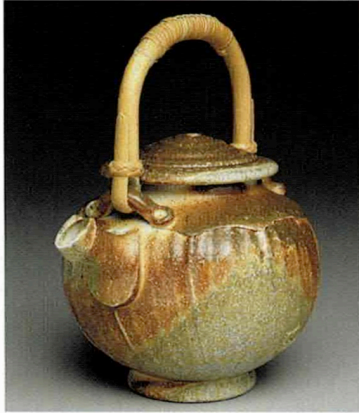
**Tom Jaszczak**  
 Shawano, WI  
 2 Star Plates  
 1x7x7" / Stoneware/porcelain; anagama  
 woodfired  
 \$96



**Doug Jeppesen**  
 Sugar Grove, IL  
 Platter  
 2x13x13" / B-Mix; woodfired  
 \$150



**Jake Johnson**  
 Bellefonte, PA  
 Cup  
 4x4x4" / Porcelain; anagama  
 \$125



**Robert Johnson**  
Omaha, NE  
Wide Wale Corduroy Teapot  
7x6x5" / Stoneware; woodfired anagama  
\$125



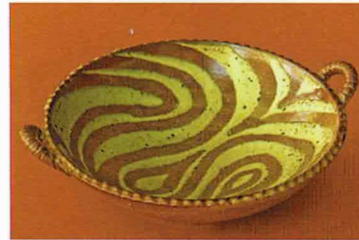
**Debbie Parker-Kuhns & Karl Kuhns**  
Dolgeville, NY  
Angels Cookie Jar  
11x8x8" / Porcelain; A8 electric  
\$275



**Susan Kennedy**  
Waco, TX  
Egg Tray  
2x10x6" / Stoneware; soda  
\$150



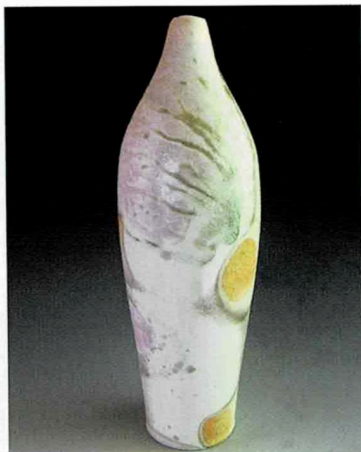
**Sooyeon Kim**  
Johns Creek, GA  
Fruitfulness - Amber Condiment Set  
9x10x5" / Porcelain; A6 oxidation  
\$395



**Ronald Larsen**  
Canton, NY  
Handled Bowl  
4x14x12" / Stoneware; reduction  
\$120



**Clay Leonard**  
Bowling Green, OH  
Server with Stacked Nesting Plates  
5x15x18" / Porcelain; A6 electric  
\$450



**Simon Levin**  
Gresham, WI  
Spotted Bottle  
12x3x3" / Porcelain; anagama  
\$120



**Brenda Lichman**  
Denton, TX  
Teapot  
5x8x6" / B-mix; soda fired  
\$195



**Paul Linhares**  
Fredericktown, OH  
Tea For One  
4x10x5" / Earthenware; <sup>Δ</sup>2 electric  
\$120



**Chris Lively**  
Dublin, VA  
Corked Bottle  
9x5x3" / Porcelain; <sup>Δ</sup>10 reduction  
\$225



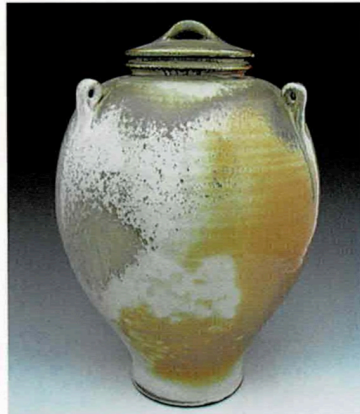
**Kandace Lockwood**  
Wellsville, NY  
Patterned Bowl  
4x10x10" / Porcelain; oxidation  
\$150



**Lynne Norwood Lofton**  
Chagrin Falls, OH  
Everyday Rabbit Vase  
6x8x4" / Earthenware; <sup>Δ</sup>04 oxidation  
\$130



**Shadow May**  
 Chattanooga, TN  
 Square Stacked Jar  
 14x5x5" / Porcelain; <sup>A6</sup> electric  
 \$240



**Joseph McCaffery**  
 Wellfleet, MA  
 Shino Covered Jar  
 16x11x11" / Porcelain; anagama  
 \$600



**Lee McCarty**  
 Oxford, MS  
 His, Hers  
 5x3x3" / Stoneware; <sup>A11</sup> soda  
 \$75



**Paul A McCoy**  
 Waco, TX  
 Harvest Suite VI  
 2x17x17" / Stoneware; reduction  
 \$400



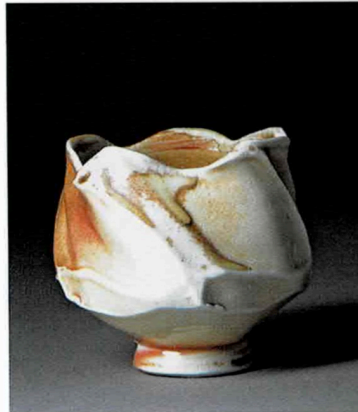
**Daryl McCracken**  
 Houston, TX  
 Pitcher  
 12x7x5" / Stoneware; woodfired  
 \$200



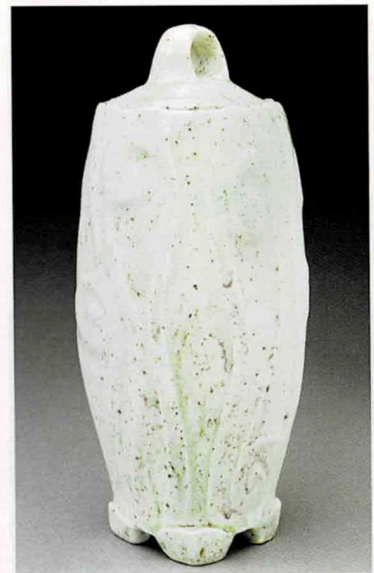
**Tracy McEvilly**  
 Cortland, NY  
 Cup and Saucer  
 6x6x6" / Porcelain; <sup>A6</sup> electric  
 \$60



**Matthew McGovern**  
Glen Arbor, MI  
Three Cups  
7x7x7" / Porcelain; <sup>^</sup>10 soda  
\$450



**Susan McHenry**  
Kalamazoo, MI  
Wave Cup with Ash Deposits  
3x4x3" / B-Mix; anagama  
\$95



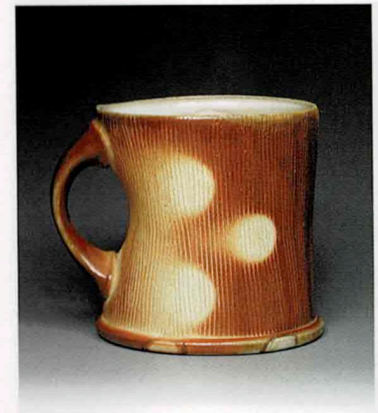
**Maureen Mills**  
Portsmouth, NH  
Jar  
11x4x4" / Porcelain; woodfired  
\$190



**Ted Neal**  
Yorktown, IN  
Faceted Tea Pot  
6x8x6" / Stoneware; <sup>^</sup>10 reduction  
\$300



**Drew Nicklas**  
Seattle, WA  
Whiskey Jam - A Pile of Tumblers  
12x17x17" / Stoneware; woodfired,  
reduction cooled  
\$450



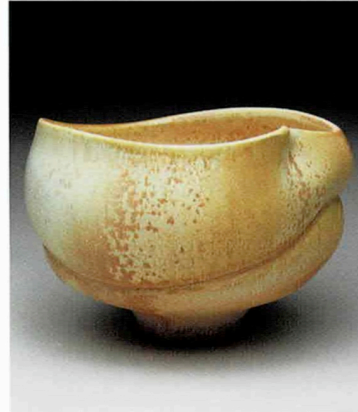
**Shawn O'Connor**  
Minot, ME  
Mug  
4x4x3" / Porcelain; woodfired  
\$40



Tom O'Malley  
Woonsocket, RI  
Covered Box  
6x10x6" / Stoneware; #10 woodfired  
\$300



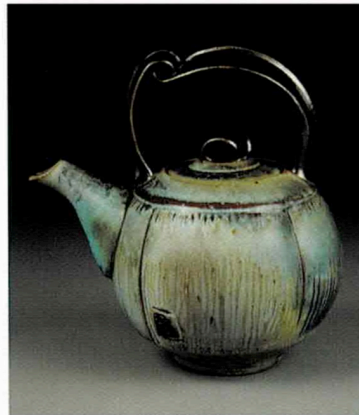
KyoungHwa Oh  
Chester Springs, PA  
Sensual Surrounding  
5x10x10" / Porcelain; #10 reduction  
\$500



John K. Oles  
New Orleans, LA  
Altered Orange Bowl  
6x7x7" / Porcelain; #10 reduction  
\$245



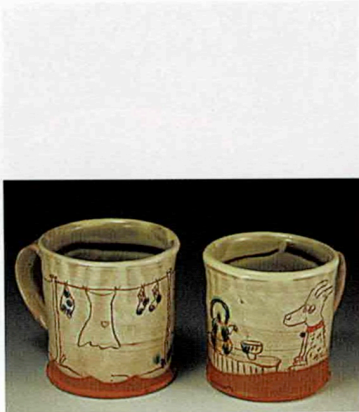
David Orser  
Parsonsfield, ME  
Jar  
6x5x5" / Stoneware; salt  
\$95



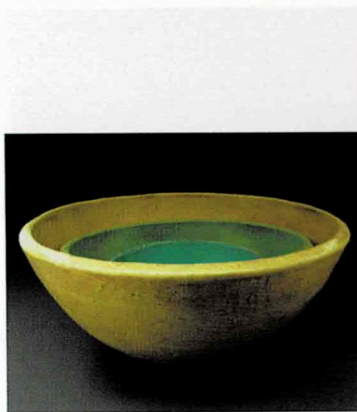
Wenfen Pan  
Okemos, MI  
Teapot  
7x7x5" / Stoneware; soda  
\$180



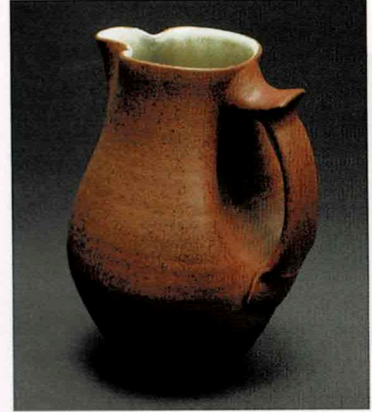
Lisa Pedolsky  
Durango, CO  
Trio  
4x11x4" / Terracotta; #04 oxidation  
\$195



**Ron Philbeck**  
Shelby, NC  
Two Mugs: Washline & Dog with Tea  
4x4x4" / Earthenware; <sup>A</sup>04 oxidation  
\$80



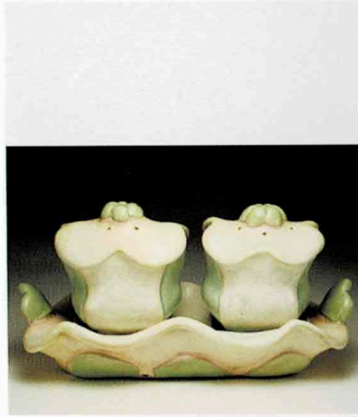
**Joseph Pintz**  
Bowling Green, OH  
Mixing Bowl Set  
6x13x13" / Earthenware; oxidation  
\$265



**Noah Riedel**  
Chapel Hill, NC  
Pitcher  
8x6x5" / Stoneware; <sup>A</sup>7 oxidation  
\$85



**Elaine Rossi**  
Woodbury, VT  
Maple Syrup Pitcher  
5x7x4" / Stoneware; <sup>A</sup>10 soda, salt  
\$68



**Cheyenne Chapman Rudolph**  
Bradenton, FL  
Salt and Pepper Set with Tray  
5x8x5" / Stoneware; <sup>A</sup>6 electric  
\$95

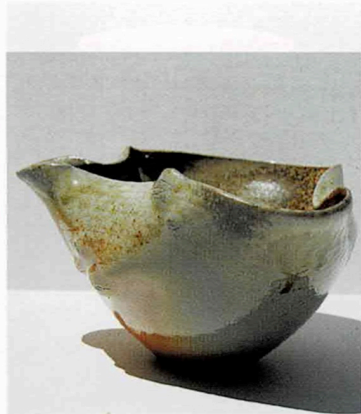


**Frank Saliani**  
Red Lodge, MT  
Bowls  
3x5x5" / Porcelain; <sup>A</sup>6 oxidation  
\$130

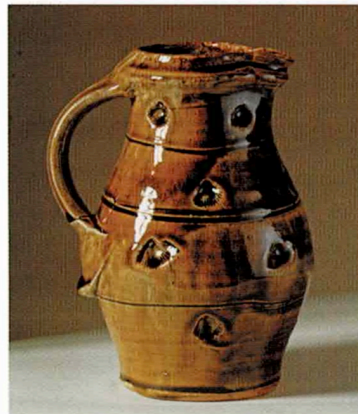




**Jim Sandefur**  
Lizella, GA  
Cup and Saucer  
5x6x4" / Stoneware, Porcelain; <sup>▲</sup>12 anagama  
\$100



**Phillip Scheer**  
Camp Hill, PA  
Pouring Bowl  
4x7x7" / B-Mix; <sup>▲</sup>11 woodfired  
\$80



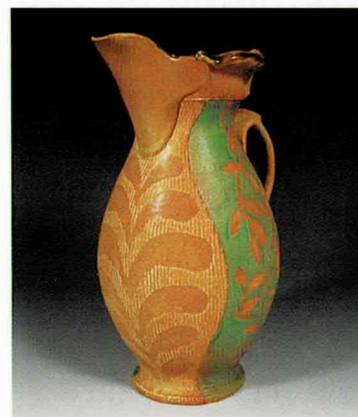
**Allison C. Severance**  
Boonsboro, MD  
Tenmoku Jug with Seashell Impressions  
8x5x3" / Stoneware; woodfired, salt  
\$64



**Deborah Shapiro**  
Tigard, OR  
Sleeping Kitty Jar  
7x8x8" / Porcelain; <sup>▲</sup>10 electric  
\$150



**Angela Shope**  
Lancaster, PA  
"Rabbits 'N' Jackets" Salt & Pepper with Tray  
7x7x4" / Porcelain; <sup>▲</sup>6 electric  
\$235



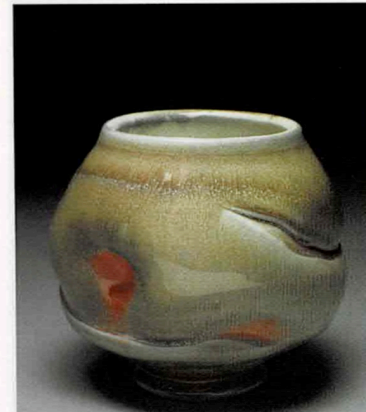
**Gloria Singer**  
East Brunswick, NJ  
Pitcher  
11x8x5" / Stoneware; electric  
\$350



**Amy Smith**  
Lincoln, NE  
Shallow Bowl  
2x12x12" / Porcelain;  $\Delta$ 10 reduction  
\$200



**Gay Smith**  
Bakersville, NC  
Canisters  
10x18x8" / Porcelain; single fire soda  
\$350



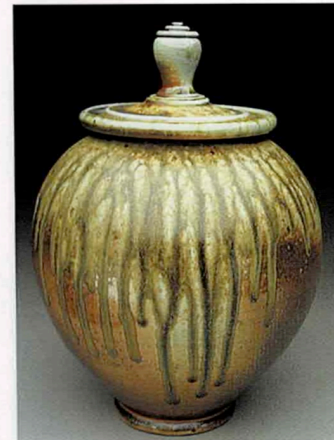
**Chris Sneed**  
Thaxton, MS  
Coral Red Tea Bowl  
4x5x3" / Porcelain;  $\Delta$ 11 soda  
\$60



**Joy Tanner**  
Bakersville, NC  
Carved Ewer  
7x7x4" / Stoneware; soda  
\$120



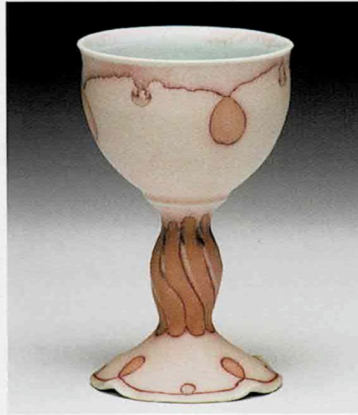
**James Tingey**  
Athens, OH  
Coffee Set  
9x16x9" / Porcelaneous stoneware;  $\Delta$ 12  
wood, biodiesel, salt,  
Tray: stoneware;  $\Delta$ 10 reduction cooled  
\$325



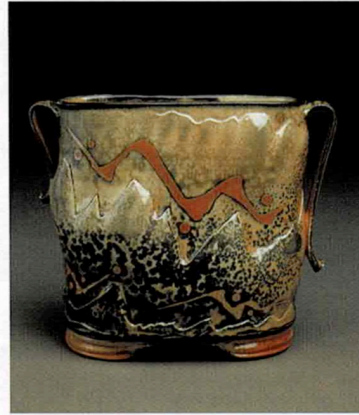
**Markus Urbanik**  
Red Lodge, MT  
Woodfired Jar  
11x9x9" / Porcelaneous stoneware;  
pine woodfired  
\$350



**Nicholas Vietor**  
Portland, OR  
Two Cups  
3x7x3" / Porcelain; <sup>A</sup>10 Reduction  
\$60



**Jennifer Wankoff**  
Philadelphia, PA  
Wine Cup  
6x4x4" / Porcelain; <sup>A</sup>6 electric  
\$60



**Sharon Kelley Warrington**  
Houston, TX  
Flower Vessel (with Built-in Flower Support)  
8x9x4" / Porcelain; <sup>A</sup>10 Reduction  
\$345



**Susan Kay Wechsler**  
Chester, NJ  
Grape Cheese Platter & Knife  
2x15x15" / Stoneware, Porcelain; <sup>A</sup>6 oxidation  
\$325



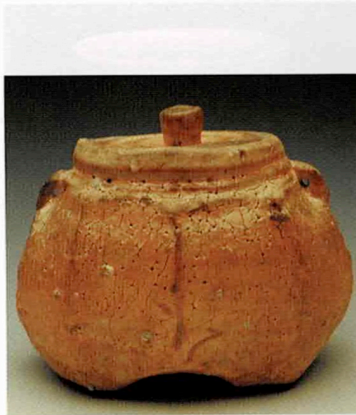
**Hong-Ling Wee**  
New York, NY  
Dancing Fish - 4 Salad/Dessert Plates  
1x9x9" / Porcelain; gas reduction  
\$280



**Lars Westby**  
Baltimore, MD  
Quatrefoil Platter  
3x18x18" / Earthenware; <sup>A</sup>04 oxidation  
\$150



**Kenneth Westfall**  
Harrisville, WV  
Spiral Carved Jar  
12x9x9" / Stoneware; Δ10 reduction  
\$390



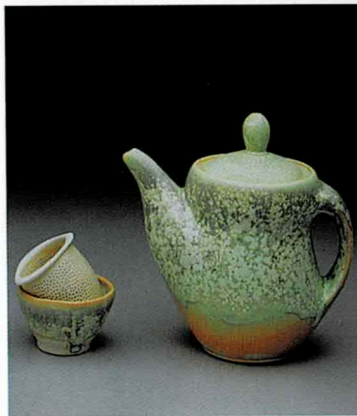
**Erik Wilhelmsen**  
Hollis, NH  
Sugar Jar  
4x5x3" / Native stoneware; woodfired  
\$60



**Layne Wyse**  
Pittsburgh, PA  
Pitcher  
7x4x5" / Stoneware; Δ12 woodfired  
\$80



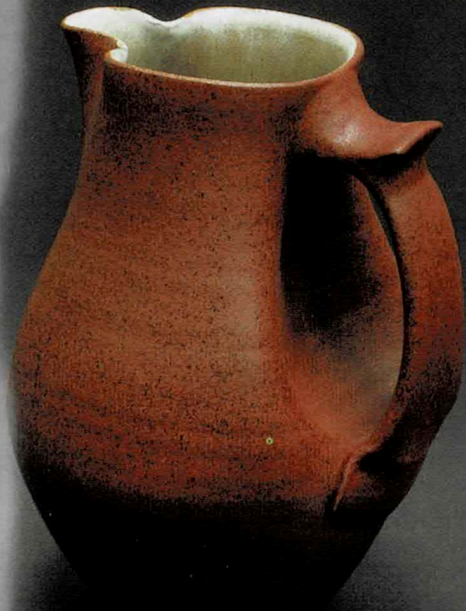
**Bob Yeaw**  
Seattle, WA  
Whiskey Set  
11x10x6" / Stoneware; reduction, soda  
\$125



**Gwendolyn Yoppolo**  
Helena, MT  
Teapot with Hanging Infuser  
7x4x7" / Porcelain; oxidation  
\$195



**Todd Zack**  
Bozeman, MT  
Teapot with Tea Bowls  
3x3x3" / woodfired  
\$275



Upper Left  
Noah Riedel  
pg 22

Upper Right  
Jennifer  
Bernhard  
Hatfield  
pg 15

Lower Right  
Drew Nicklas  
pg 20

2009 SFPN VISIONARIES

**Bailey Pottery Equipment Corp.**  
PO Box 1577  
Kingston, NY 12402  
800.431.6067  
www.baileypottery.com

**Market House Craft Center**  
PO Box 204  
East Petersburg, PA 17520-0204  
717.560.8816  
www.strictlyfunctionalpottery.com

**Lancaster Designer Craftsmen**  
PO Box 204  
East Petersburg, PA 17520-0204  
717.560.8816  
lancasterdesigner@yahoo.com

**Standard Ceramic Supply Co.**  
PO Box 1624  
Pittsburgh, PA 15242-0240  
412.276.6333  
www.standardceramic.com

2009 SFPN PATRONS

**AMACO - American Art Clay Co.**  
6060 Guion Road  
Indianapolis, IN 46254  
800.374.1600; 317.244.6871  
www.amaco.com

**Central PA Potter's Group**  
1435 Old Reliance Rd.  
Middletown, PA 17057  
717.985.9270  
email: centralpapotters@comcast.net

**Ceramics Monthly**  
735 Ceramic Place, Suite 100,  
PO Box 6102  
Westerville, OH 43081  
614.890.4700  
www.ceramicsmonthly.org

**Clay Times**  
PO Box 365  
Waterford, VA 20197-0365  
540.882.3576  
www.claytimes.com

**Harrisburg Area Community College,  
Ceramics Club**  
One HACC Drive  
Harrisburg, PA 17110  
717.780.2435 / Contact: Shawn Williams  
www.hacc.edu  
www.pacrafts.org (Capital Chapter / PGC)

**Jean B. Lehman**  
for classes in Lancaster, PA  
717.291.2154

**Joanne Cassaro Design**  
www.joanecassaro.com

**Kevin Lehman's Pottery**  
560 S. Prince St.  
Lancaster, PA 17603  
717.509.7547  
www.klpottery.com

**Laguna Clay Co.**  
14400 Lomitas Ave.  
City of Industry, CA 91746  
626.330.0631 / (800) 4-LAGUNA  
www.lagunaclay.com



**L&L Kiln Mfg. Inc.**  
505 Sharptown Rd.  
Swedesboro, NJ 08085  
877.455.5456  
www.hotkilns.com

**PA Guild of Craftsmen**  
252 N. Prince Street  
Lancaster, PA 17603  
717.431.8706  
www.pacrafts.org

**Pocono Chapter, PA Guild of Craftsmen**  
www.poconocrafts.com

**Skutt Ceramic Products**  
6441 SE Johnson Creek Rd.  
Portland, OR 97206  
503.774.6000  
www.skutt.com

**Zimmerman, Pfannebecker,  
Nuffort & Albert, LLC**  
22 S. Duke St.  
Lancaster, PA 17602  
717.299.0711

2009 SFPN FRIENDS

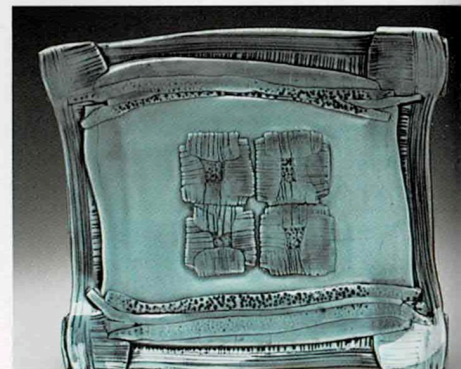
**Brookshire Printing, Inc.**  
200 Hazel Street  
Lancaster, PA 17603  
717.392.1321  
www.brookshireprinting.com

**Clayworks Supplies**  
4625 Falls Road  
Baltimore, Maryland 21209  
410.235.5998  
www.clayworkssupplies.com

**Millersville University, Clay Students**  
717.872.3011  
www.millersville.edu

**Red Raven Art Company**  
138 N. Prince St.  
Lancaster PA 17603  
717.299.4400

**Windsor Chair Shop**  
of Lancaster County  
www.pachairmaker.com



Upper Right  
Jason Dunn  
pg 13

Lower Right  
Marion  
Angelica  
pg 9

Jake Allee .....9  
 JoAnn Axford .....9  
 Marion Angelica .....9  
 Posey Bacopoulos .....9  
 Aaron Anslow .....9  
 Marc J. Barr .....9  
 Bethany Benson .....10  
 Doug Blechner .....10  
 David Beumee .....10  
 Birdie Boone .....10  
 Nicholas Bivins .....10  
 Jenni Brant .....10  
 Lisa Buck .....11  
 Nan Coffin .....11  
 Jessica Caccamo .....11  
 Elizabeth Cohen .....11  
 Autumn Cipala .....11  
 Jim Connell .....11  
 Scott Cooper .....12  
 Janine Davis .....12  
 Julie Crosby .....12  
 Susan Dewsnap .....12  
 Angela Cunningham .....12  
 Lucy V. Dierks .....12  
 Jim Dugan .....13  
 Randy Edmonson .....13  
 Jason Dunn .....13  
 Lisa Ernst .....13  
 Jimmy Eddings .....13  
 Sharon Farrelly .....13  
 Edward Feldman .....14  
 Colleen Gallagher .....14  
 Scott Frankenberger .....14  
 Tina Gebhart .....14  
 Joyce M. Fujiwara .....14  
 Ernest Gentry .....14  
 Seth Green .....15

Greg Jahn & Nancy Halter .....15  
 Ryan J. Greenheck .....15  
 Jennifer Bernhard Hatfield .....15  
 Perry Haas .....15  
 Stephen Heywood .....15  
 Matthew Hyleck .....15  
 Tom Jaszczak .....16  
 Erica Iman .....16  
 Doug Jeppesen .....16  
 Mike Jabbur .....16  
 Jake Johnson .....16  
 Robert Johnson .....17  
 Sooyeon Kim .....17  
 Debboe Parker-Kuhns &  
 Karl Kuhns .....17  
 Ronald Larsen .....17  
 Susan Kennedy .....17  
 Clay Leonard .....17  
 Simon Levin .....18  
 Chris Lively .....18  
 Brenda Lichman .....18  
 Kandace Lockwood .....18  
 Paul Linhares .....18  
 Lynne Norwood Lofton .....18  
 Shadow May .....19  
 Paul A McCoy .....19  
 Joseph McCaffery .....19  
 Daryl McCracken .....19  
 Lee McCarty .....19  
 Tracy McEvilly .....19  
 Matthew McGovern .....20  
 Ted Neal .....20  
 Susan McHenry .....20  
 Drew Nicklas .....20  
 Maureen Mills .....20  
 Shawn O'Connor .....20  
 Tom O'Malley .....21

David Orser .....21  
 KyoungHwa Oh .....21  
 Wenfen Pan .....21  
 John K. Oles .....21  
 Lisa Pedolsky .....21  
 Ron Philbeck .....22  
 Elaine Rossi .....22  
 Joseph Pintz .....22  
 Cheyenne Chapman Rudolph .....22  
 Noah Riedel .....22  
 Frank Saliari .....22  
 Jim Sandefur .....23  
 Deborah Shapiro .....23  
 Philip Scheer .....23  
 Angela Shope .....23  
 Allison C. Severance .....23  
 Gloria Singer .....23  
 Amy Smith .....24  
 Joy Tanner .....24  
 Gay Smith .....24  
 James Tingey .....24  
 Chris Sneed .....24  
 Markus Urbanik .....24  
 Nicholas Vietor .....25  
 Susan Kay Wechsler .....25  
 Jennifer Wankoff .....25  
 Hong-Ling Wee .....25  
 Sharon Kelley Warrington .....25  
 Lars Westby .....25  
 Kenneth Westfall .....26  
 Bob Yeaw .....26  
 Erik Wilhelmson .....26  
 Gwendolyn Yoppolo .....26  
 Layne Wyse .....26  
 Todd Zack .....26



Above  
 Angela Shope  
 pg 23

17<sup>TH</sup> ANNUAL  
STRICTLY  
FUNCTIONAL  
POTTERY NATIONAL

Kevin Lehman's Pottery  
Lancaster, PA  
September 26–October 25, 2009  
Presented by the Market House Craft Center

[www.strictlyfunctionalpottery.com](http://www.strictlyfunctionalpottery.com)

See this year's show and past shows online  
at SFPN website all year long.

