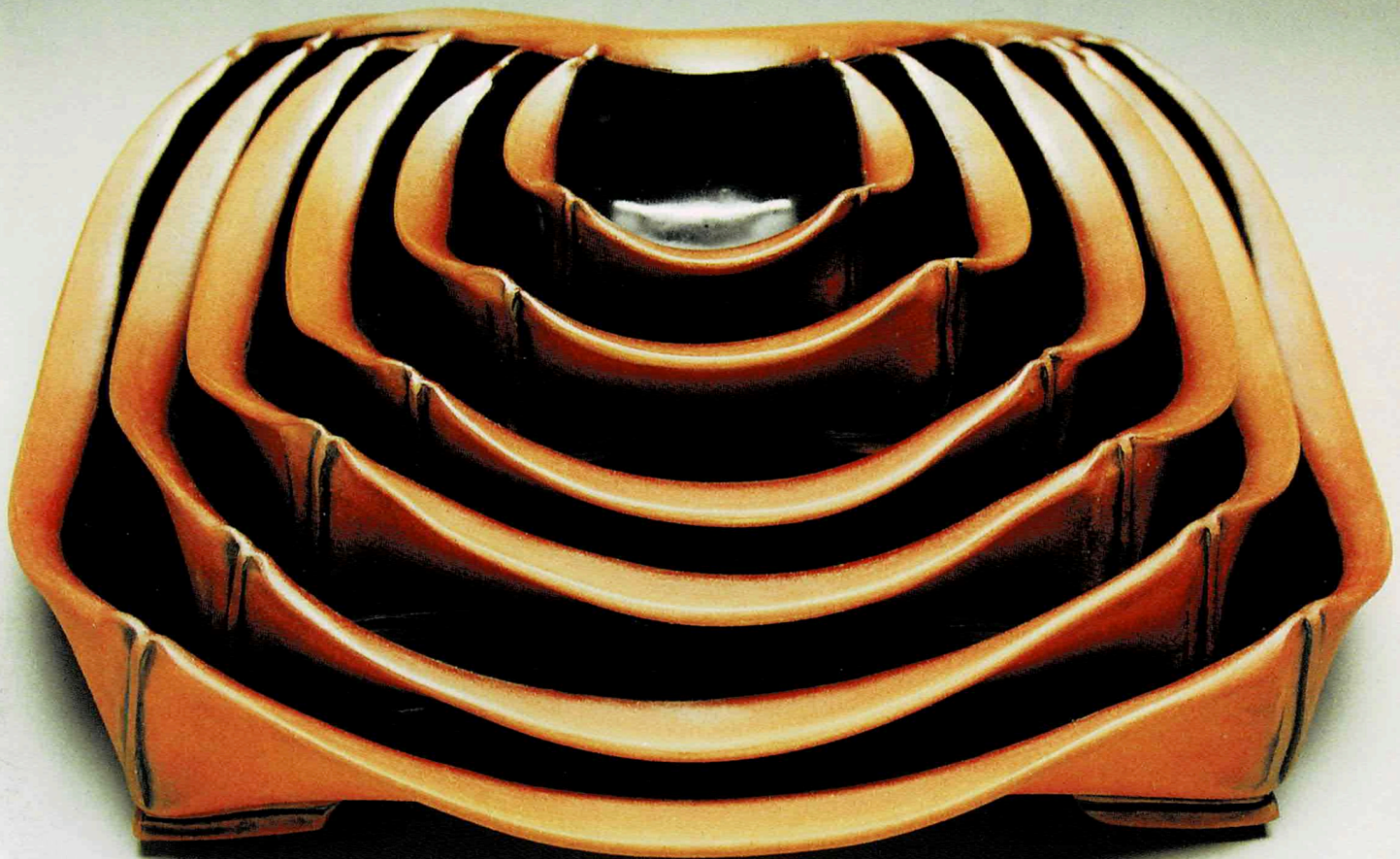


**TWELFTH ANNUAL STRICTLY FUNCTIONAL POTTERY NATIONAL<sup>©</sup>**

**PRESENTED BY THE MARKET HOUSE CRAFT CENTER**



**April 24 - May 31, 2004 • Southern Market Center, Lancaster, PA • Juror: Susan Peterson**

# COVER

**Cheryl Crowover**

Santa Fe, NM

Set of Six Nested Bowls 7x15x15

Δ5 oxidation fire

TWELFTH  
ANNUAL

# **STRICTLY FUNCTIONAL POTTERY NATIONAL<sup>®</sup>**

12

**Susan Peterson, JUROR**

**Founded and Originated by The Market House Craft Center**

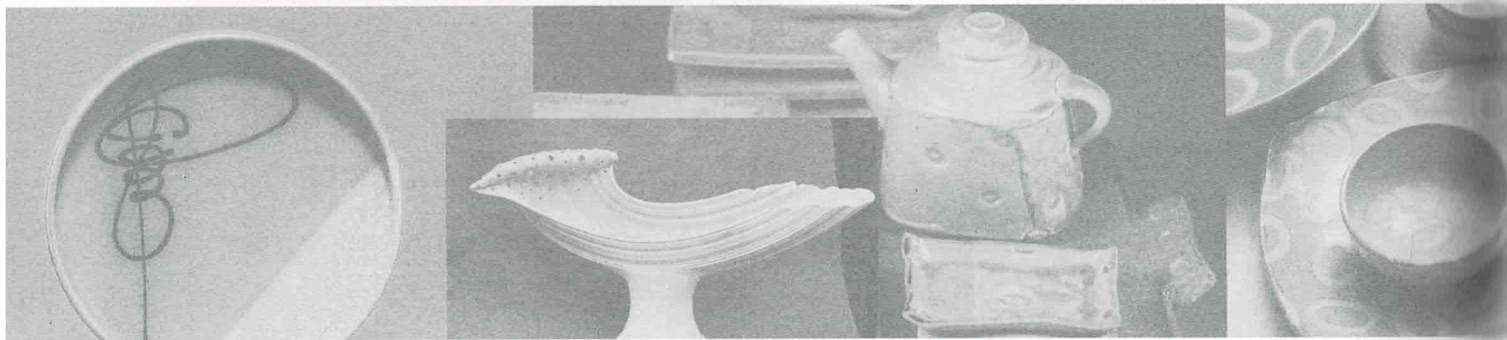
# Juror's Statement

12th Annual Strictly Functional Pottery National®

If you read my article in *Ceramic Monthly* magazine last year, you know I said I would not jury another show by slides, and here I am doing it again. In this "Strictly Functional" show there are many things to consider. The obvious – "Will a pitcher pour and not drip? Can a teapot be filled to the brim and will it pour well? Does the pot sit squarely enough? Is the glaze appropriate for the function?" – and so on – but do you know how hard it is to see those things in a two-dimensional slide if the photographer has not considered the angle to be portrayed? The profile of a pitcher or teapot often does not, cannot, show the shape of the lip or the necessary sharpness thereof. Furthermore I could not see the inside flange of any teapot lid to know if the length of that flange was sufficient to hold the lid on the pot while pouring tea.

It is almost impossible to choose only 100 or so slides from 1468 slides of basically good work. Then there is the question of whether purely decorative is also a reasonable function? I chose to deny this and mostly eliminated purely sculptural or non-functional. The mystique and seductiveness of wood fire, salt and soda fire, are hard to ignore, but we must consider – when speaking of function – the surface of a pitcher, cup, casserole, even a teapot, and the quality of easy-to-clean as well as whether or not the interior unifies the whole piece.

Given the above list of difficulties, then what could I judge upon? First, out of these hundreds of slides one hopes to find a few that sing lustily, that cannot go unnoticed, that really say "wow," for whatever reasons, mostly subliminal. Then I looked for really functional pieces that could be called



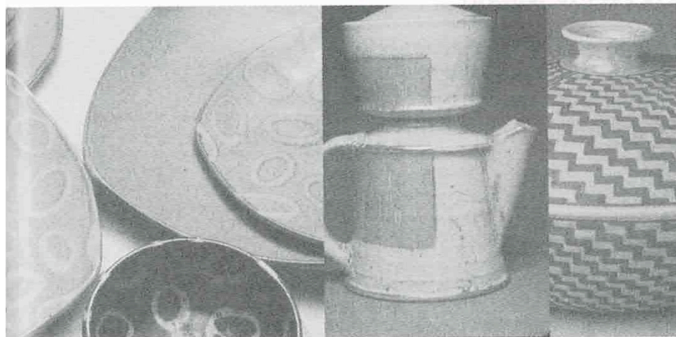
beautiful, or whimsical, or had the elusive attribute we call "presence." Going over each slide countless times with the projector and screen, as well as by hand, comparing back and forth, was a monumental task. I do not ask forgiveness – it's my fault for accepting this jury duty!

Then there is the question of scale. Does a 3 inch by 3 inch by 3 inch cup pack as big a wallop as a 12 inch tall bottle or a 15 inch platter? In a slide it's hard to tell what the scale is without looking at the written dimensions of a piece, so I have to say I looked at the size of every piece on slide, but not all slides had dimensions, which deterred me. It really means that the smaller works must be outrageous to hold their own among larger objects. Obviously the exhibition is popular and I hope that end satisfies the means.

Those I chose are the ones I thought best satisfied our expectations, but I know I may be surprised when I see them in real life. Actually I had a good time reviewing a lot of wonderful work. I tried to choose only one piece from each artist to vary the show and give more chances. I tried to choose the works that seemed to answer "strictly functional" as much as I could tell from the slides. I gave an inch several times for humor or inventiveness or when I couldn't really see the inside or the outside of a work, I had to hope for the best.

Meanwhile, let me thank you all for coming and I sincerely hope our efforts are not entirely in vain and that the outcome will be a really good show.

Thank you,  
*Susan Peterson*  
February 2004



TWELFTH  
ANNUAL  
**STRICTLY  
FUNCTIONAL  
POTTERY NATIONAL®**

12

# Awards

---

Best of Show	\$500	Standard Ceramic Supply Co.
First Place Award	\$300	Del Val Potter's Supply Co.
Second Place Award	\$250	Bailey Pottery Equipment Corp.
Award for Innovation	\$300	PA Guild of Craftsmen
Designer Craftsmen Award*	\$250	Lancaster Designer-Craftsmen
Potter's Group Award*	\$150	Central PA Potter's Group
Best Teapot	\$100	Penn-Mo Fire Brick Co.
Best Thrown and Altered	\$200	Laguna Clay Co.
Juror's Choice Cash Award:	\$100	Creative Industries
Juror's Choice Cash Award:	\$100	John Hesselberth & Ron Roy*, Authors of "Mastering Cone 6 Glazes"
Juror's Choice Cash Award:	\$100	Orton Ceramic Foundation
Juror's Choice Cash Award:	\$100	Skutt Ceramic Products
Attorney's Award*	\$100	Law Offices of Zimmerman, Pfannebecker & Nuffort
Founder's Award*	\$100	Scott Jones, Founder of the SFPN
Director's Award for Form and Function*	\$200	Jean B. Lehman, Director of the SFPN

*\*Awards selected by the award sponsors. All others selected by Susan Peterson.*

---

## Awards from Permanent Collections

Pieces will become part of the following permanent collections:

Art Center Award*	\$500	Nottingham Arts
Juror's Choice	\$250	Ceramics Monthly
Juror's Choice	\$200	Clay Times
Juror's Choice	\$150	Bailey Pottery Equipment Corp.
Juror's Choice	\$100	L&L Kiln Mfg. Inc.

## Merchandise Awards

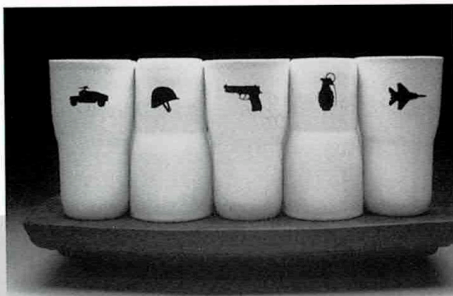
AMACO: American Art Clay Co., Inc.	\$100 Gift Certificate for Merchandise
Giffin Tec., Inc.	2 Giffin Grips awarded
International Technical Ceramics, Inc. (ITC)	4 ITC Kiln Repair Kits for gas or electric kilns

## People's Choice Award

To be chosen by the public \$150 to be awarded May 31 at the close of the exhibit.

**Ian C. Anderson**

Lincoln, NE  
"Pre-emptive Strike Memorial Cup Set"  
9x17x9  
Porcelain cups; ^9 w decals earthenware  
plinth; Δ03  
\$275



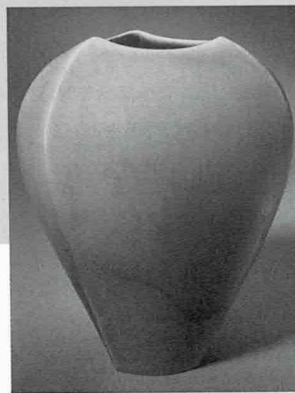
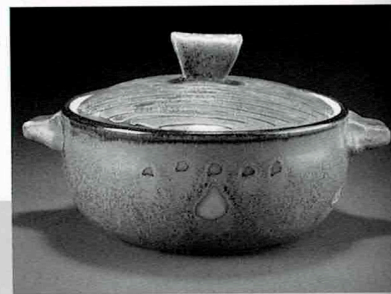
**Posey Bacopoulos**

New York, NY  
Oval Ewer  
5x6x4  
Terra Cotta; Majolica  
\$95



**Marian Baker**

Yarmouth, ME  
Covered Dish 6x11x9  
Porcelain; Δ6 oxidation fired  
\$95



**Mark Bell**

Blue Hill, ME  
Flower Vase 9x5x5  
Porcelain; Δ10 reduction fired  
\$250



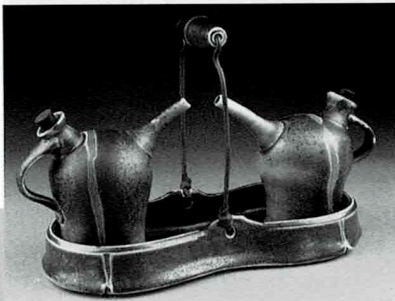
**John Benn**

Shelton, WA  
Vase 12x11x11  
Local stoneware; wood fire  
\$600



**Michael Baxley**

Prairie Village, KS  
Oil & Vinegar Set 9x4x6  
Porcelain;  
Single fire  $\Delta$ 10 reduction fired  
\$110



**Janet Belden**

Long Island City, NY  
Oval Fish Platter 1x14x7  
Maiolica Glazed Earthenware;  $\Delta$ 04 electric  
fired  
\$80

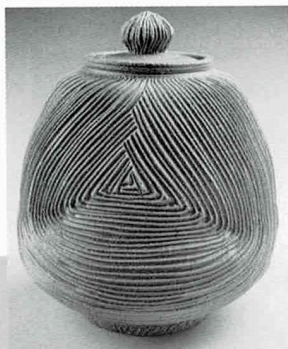


**Deborah Dinell Berry**

Richardson, TX  
"Black Beauty"  
16x7x7  
Stoneware;  $\Delta$ 10 soda fire  
\$325

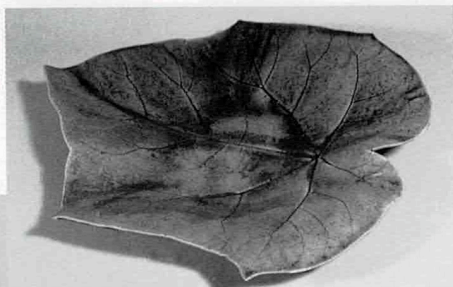
**Sharif Bey**

Alpharetta, GA  
Onion Jar 14x11x11  
Stoneware; soda fire  
\$550



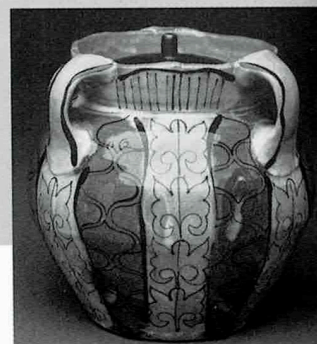
**Connie Bracci-McIndoe**

Hopewell, NJ  
Platter  
3x21x21  
Stoneware; Δ10 reduction fire  
\$350



**William Brouillard**

Cleveland, OH  
Dinnerware #1  
12x12x12  
Porcelain; Δ10 reduction fire  
\$265



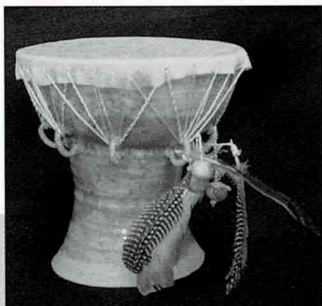
**Todd Burns**

Louisville, KY  
Untitled  
8x8x8  
Earthenware; electric  
\$250

**Helen Brown**

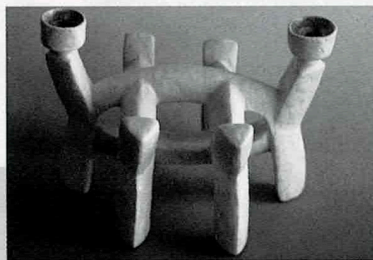
Susanville, CA  
Drum 10x10  
Sculpture clay, cowhide,  
feathers, nylon cord; Δ10 gas  
fired

\$150



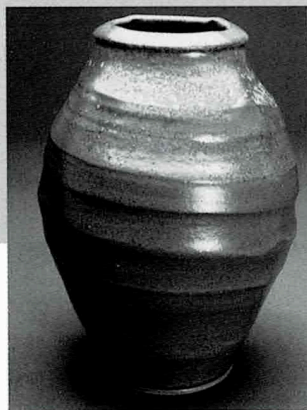
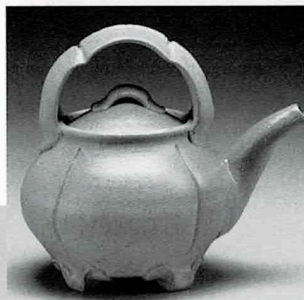
**Bob Bruch**

Cleveland, OH  
Double Candlestick  
9x9x12  
Stoneware; Δ6 oxidation fire  
\$325



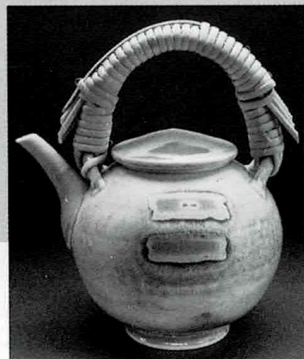
**Lisa Buck**

Afton, MN  
Terra Sig Teapot  
7x8x6  
Earthenware; Δ04 electric  
\$100



**Jeff Campana**

Whitewater, WI  
Red Vase 11x7x7  
Stoneware; Δ10 Reduction fire  
\$200



**Connie Christensen**

Arvada, CO  
Teapot 9x7x5  
Porcelain; Δ10 reduction fire  
\$125

**Blair Clemo**

Missoula, MT  
Teapot 9x8x6  
Porcelain; soda fire  
\$125



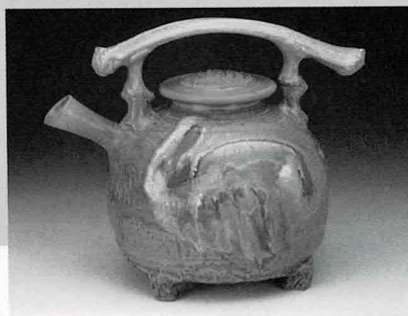
**Donna Cole**

Aloha, OR  
"Seapot II" 11x9x6  
Stoneware; Δ6 oxidation fire  
\$300



**Jim Connell**

Rock Hill, SC  
Red Lobed Bowl  
5x15x15  
Porcelain; Δ10 reduction fire  
\$300



**Bob Crystal**

Cornwall, VT  
Teapot 10x7x5  
Stoneware; gas reduction fire  
\$160

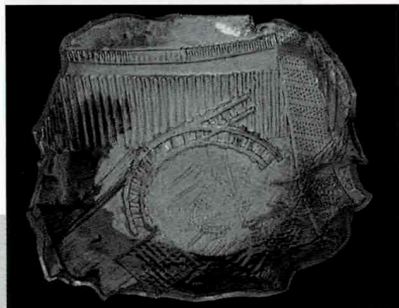


**Bob Crystal**

Cornwall, VT  
8 Quart Casserole 9x14x12  
Stoneware; gas reduction fire  
\$200

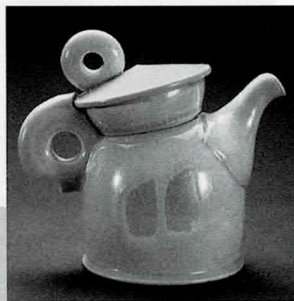
**Michele Corazzo**

Chesterton, IN  
Blue Series  
5x19x21  
Stoneware; electric  
\$400



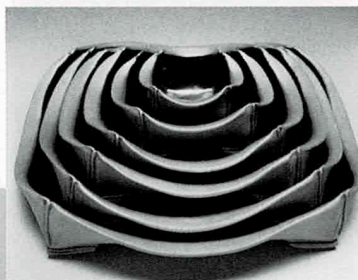
**Scott D Cornish**

Morgantown, WV  
Teapot with Loose  
Leaf Tea Strainer 8x7x6  
Porcelain; soda fire  
\$240



**Cheryl Crownover**

Santa Fe, NM  
Set of Six Nested Bowls  
7x15x15  
Δ5 oxidation fire  
\$600



**Bruce Dehnert**

Layton, NJ  
Butter Dish 13x11x9  
Porcelain; wood fire  
\$300

**Doug Dotson**

Pittsboro, NC  
Covered Bowl 6x9x9  
Stoneware; gas, soda fire  
\$110



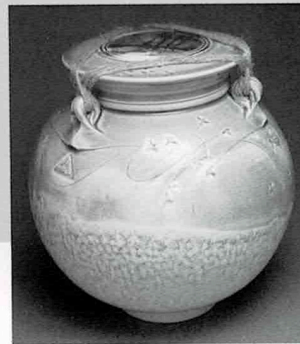
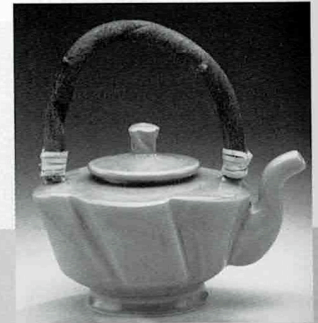
**Jan Doyle**

Mt Airy, MD  
Water Can Planter 9x14x5  
Stoneware; Δ6 oxidation fire  
\$125



**Stephen Driver**

Owensboro, KY  
Porcelain Teapot with  
Wisteria Handle 9x10x7  
Porcelain; gas fire  
\$350



**Carl Erickson**

Sillwater, MN  
Ginger Jar 10x10x10  
Porcelain; Δ10 reduction  
propane  
\$250



**Lucy Fagella**

Greenfield, MA  
Sushi Set 4x6x6  
Porcelain; Δ6 oxidation fire  
\$95

**Judith Duff**

Brevard, NC  
Butter Cheese Dish 5x9x9  
Porcelain; wood fire  
\$90



**Craig Edwards**

New London, MN  
Anagama Jar 16x12x12  
Stoneware; Anagama  
\$600



**Anne Fallis Elliott**

New York, NY  
Pitcher on a Tray  
1x10x8  
Stoneware; Δ7 electric fire  
\$90



**Marty Fielding**

Columbus, OH  
Stoveside Coffee Pot  
10x8x6  
Stoneware; reduction fire  
\$150

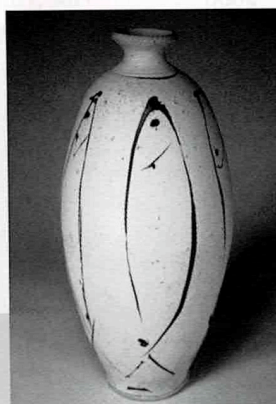
**Susan Filley**

Mt Pleasant, SC  
Zig Zag Tray  
2x8x15  
Porcelain;  $\Delta$ 10 reduction  
\$195



**Stephen D Frazier**

Rome, GA  
Bottle of Fish 16x7x7  
Stoneware;  $\Delta$ 4 salt  
\$200



**Jere Frutchey**

Albuquerque, NM  
"Undulating Forms #2" Bowl  
2x14x15  
Earthenware; lowfire  
\$280



**Hank Goodman**

Arden, NC  
Slip Trailed Casserole 8x11x10  
Stoneware;  $\Delta$ 10 reduction  
\$95



**Susan Gerr**

Tolland, CT  
Sushi Set 2x10x10  
Stoneware; Δ6 electric  
\$200



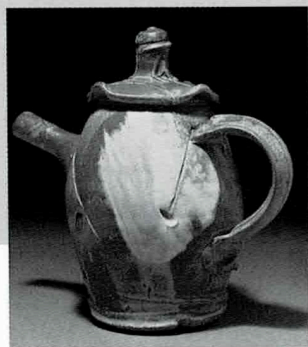
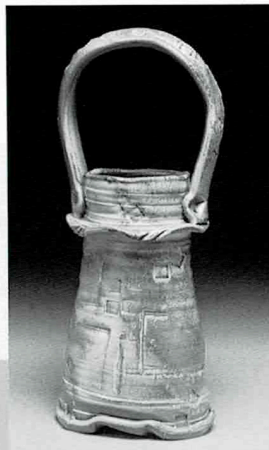
**Xavier Gonzalez**

Sherman Oaks, CA  
"Ballerina Tu Tu"  
Porcelain; oxidation fire  
\$490



**Hank Goodman**

Arden, NC  
Basket Handle Shino Vase  
21x9x7  
Stoneware; Δ10 reduction  
\$250



**Joseph Goss**

Ames, IA  
Teapot 8x6  
Stoneware; Δ10 reduction  
\$150



**Sue Grier**

Columbia, SC  
Black Bottle Trio 12x12x6  
Stoneware; wood fire  
\$160

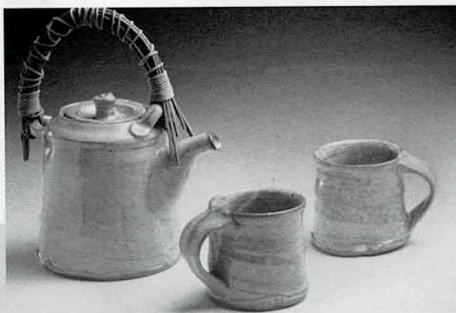
**Karen Haralson-Galvez**

Walland, TN

Teapot and Two Cups 9x4x7

Stoneware; gas reduction fire

\$200



**Hodaka Hasebe**

Pittsford, NY

Bowl 4x11x11

Stoneware; Δ10 reduction fire

\$50



**Barbara Hoffman**

Denver, CO

Teapot & Four Cups 8x7x6; 3x3x3

Porcelain; reduction fire

\$300



**Rich Holck**

State College, PA

Vase 19x8x8

Stoneware; Anagama

\$160

**Jason Hess**

Flagstaff, AZ

Five Whisky Bottles 14x4x4 (avg)

Stoneware; wood, soda, reduction cooled

\$600



**Travis Hinton**

Lawrence, KS

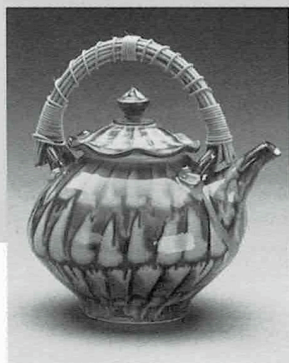
Anagama Vase

10x6x5

Stoneware;

Anagama, firebox

\$300



**Sarah Jaeger**

Helena, MT

Teapot 9x9x7

Porcelain, reed handle; gas  
oxidation fire

\$175



**Janice Jakielski**

Manchester, CT

"Democracy Collection: Soup to Nuts"

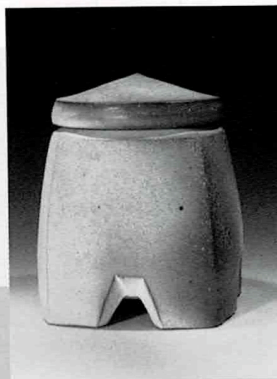
4x16 (set)

Porcelain;  $\Delta 7$  oxidation fire

\$500

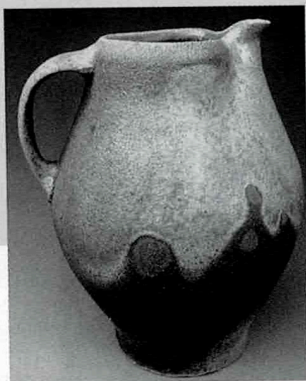
**Roger Jamison**

Juliette, GA  
Anagama Jar 6x5x5  
Stoneware; Anagama  
\$150

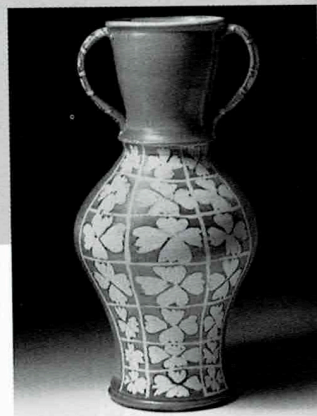


**Stephen V Jaskowak**

Carlstadt, NJ  
"Slug-O-Matic Punch Bowl"  
7x15x15  
Porcelain; Δ6 oxidation fire  
\$600



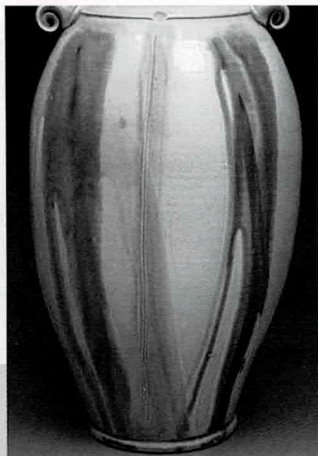
**Simon Levin**  
Gresham, WI  
"Mountain Pitcher"  
10x7x7  
Stoneware; Anagama  
\$180



**Carol Grocki Lewis**  
New York, NY  
Matisse Inspired Vessel  
14x8x8  
Porcelain; Wood fire  
\$600

**Ryan Labar**

Helena, MT  
Quadrilateral Vase 11x7x7  
Porcelain;  $\Delta$ 10 gas, soda  
oxidation fire  
\$100



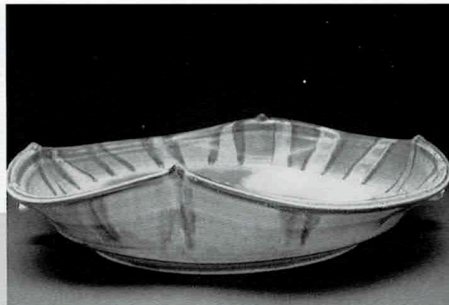
**Julie Johnson**

Seneca Falls, NY  
Casserole 8x12x8  
Porcelain;  $\Delta$ 10 salt  
\$280



**Jayson Lawfer**

Missoula, MT  
Platter 4x16x16  
Porcelain;  $\Delta$ 10 soda fire  
\$95



**Paul Linhares**

Fredericktown, OH  
"Holding Together"  
2x17x10  
Earthenware;  $\Delta$ 5 oxidation fire  
\$175

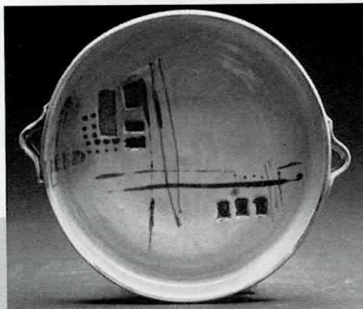
**Susannah Lints**

Vancouver, WA  
"Scarlet Runner Bean" 14x21x14  
Terracotta; Serra sig; majolica  
\$300



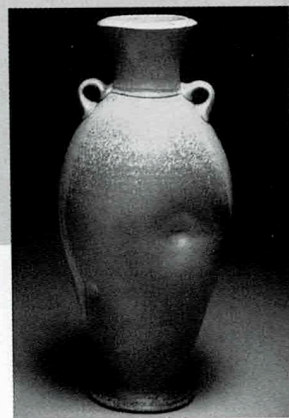
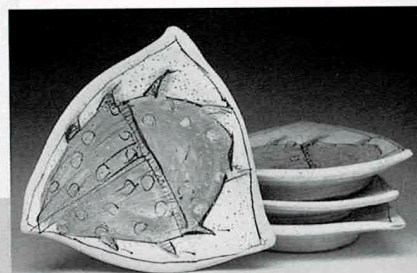
**Keri Logel**

Buffalo, NY  
Wedding Platter 3x15x15  
High fire white clay; Δ10  
reduction fire  
\$150



**Scott Lykens**

Winston-Salem, NC  
Triangle June Bug Plates 3x7x7  
Earthenware; Δ3 electric  
\$160



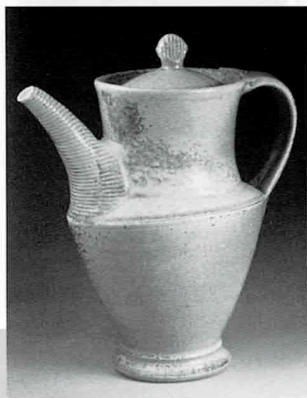
**Shane Mickey**

Bakersville, NC  
"Peabody Vase" 16x8x6  
Stoneware with glass runs;  
wood fired  
\$300

**Peg Malloy**

Carbondale, CO  
Coffee Pot 10x8x5  
Stoneware; 18 hr Bourry Box  
Wood Kiln

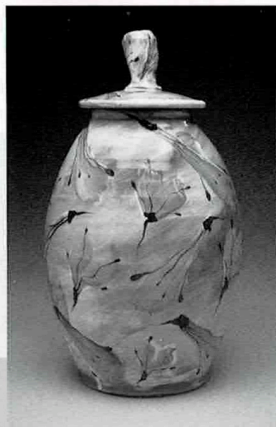
\$250



**George McCauley**

Helena, MT  
Covered Jar 15x8x8  
Earthenware; oxidation fire

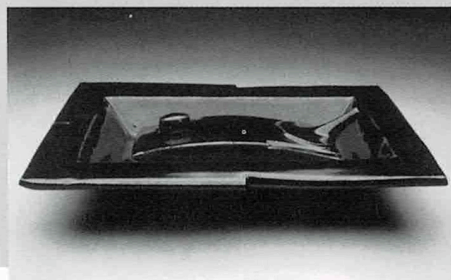
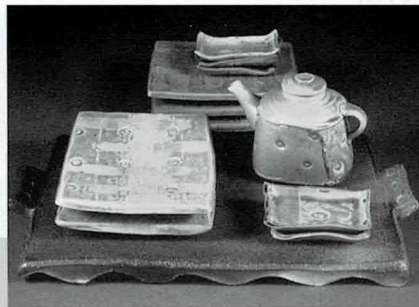
\$250



**Brad McLemore**

Williamsburg, VA  
Sushi Service 5x15x9  
Porcelain & stoneware; soda fire

\$275



**Sequoia Miller**

Olympia, WA  
Tamari Service 3x11x8  
Stoneware; reduction fire

\$275



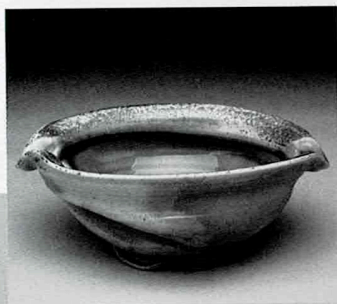
**Michael Minster**

Wichita, KS  
"TV, Jar, with Cake stand"  
8x5x4  
Earthenware, Δ04 & Δ018  
oxidation fire

\$250

**Erin Murphy**

Knoxville, TN  
Bowl 3x9x7  
Stoneware; Δ12 wood fire  
\$150



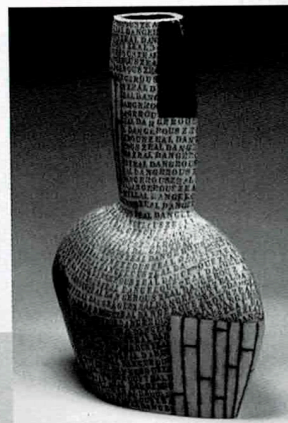
**Kathleen Nez**

Santa Fe, NM  
Tularosa B/W Casserole 5x11x11  
Stoneware; Δ10 reduction fire  
\$500



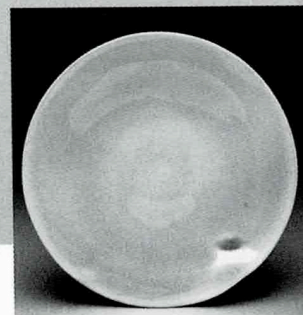
**Connie Norman**

Cheyenne, WY  
"Dangerous Zeal" 20x16x6  
Terra Cotta; Δ04 electric fire  
\$600



**Robert and Beverly Pillers**

Chesapeake, VA  
Teapot & Tray 7x13x8  
Stoneware; Wood fired  
\$175



**David Piper**

Oakland, CA  
Platter 4x16x16  
Porcelain; Δ9 reduction fire  
\$97



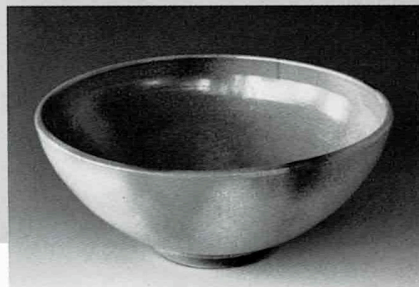
**Charlie Parker**

St Petersburg, FL  
Covered Jar 17x9x9  
Stoneware; soda fire  
\$450



**Anjuli N Perkins**

Caneadea, NY  
Blue Leaf Salt & Pepper 3x6x3  
B-Mix; Δ10 soda fire  
\$100



**Michael Pressman**

Tarrytown, NY  
Bowl 6x14x14  
Stoneware; Δ10 reduction fire  
\$125



**John W Preus**

Rocheport, MO  
Binocular Vase 9x11x6  
Stoneware; reduction fire  
\$190

**David L Price**

Kansas City, MO  
Platter with Landscape  
3x19x19  
Porcelain; salt, soda fire  
\$500



**Kari E Radasch**

Lincoln, NE  
Butterdish 5x8x4  
Terra Cotta; electric  
\$120



**Mark Rossier**

Longmont, CO  
Tea Set 8x17x8  
Stoneware; gas oxidation fire  
\$285



**Jed Schlegel**

Joplin, MO  
Freeform Bowl 6x21x21  
Stoneware;  $\Delta$ 10 reduction fire  
\$380

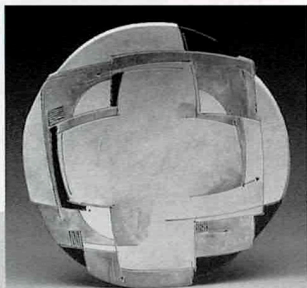
**Steven Schaeffer**

Athens, OH  
Flower Vase 24x9x9  
Stoneware; wood fire  
\$150



**Tom Schiller**

Kansas City, MO  
"Summa" 3x22x22  
Earthenware; electric low fire  
\$475



**Jed Schlegel**

Joplin, MO  
Lidded Oval Jar 5x10x5  
Stoneware; Δ10 reduction fire  
\$160



**Dede Schmidt**

Virginia Beach, VA  
Nesting Bowls 5x14x14 (set)  
Porcelain; Δ6 electric oxidation fire  
\$400



**Margaret Seidenberg-Ellis**

Lebanon, PA  
Tea box 6x7x6  
Stoneware; Δ6 oxidation fire  
\$200

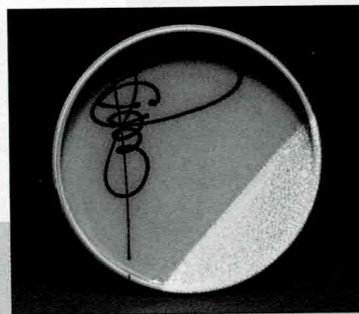
**Nicholas Seidner**

Middletown Springs, VT  
Cruet Set 6x9x4  
Stoneware;  $\Delta$ 10 gas, soda fire  
\$140



**Deborah Shapiro**

Tigard, OR  
Platter 2x16x16  
Porcelain;  $\Delta$ 10 electric  
\$160



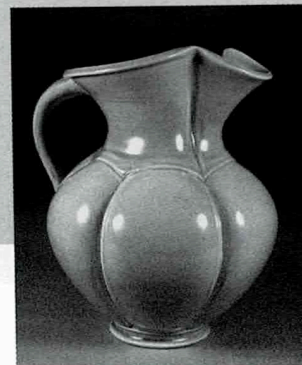
**Lindy Shuttleworth**

New York, NY  
"Art of Tea" on tray, reed handle  
12x12x8  
Stoneware;  $\Delta$ 10 reduction fire  
\$250



**Gloria Singer**

East Brunswick, NJ  
Ewer Set 6x9x6  
Red Clay;  
 $\Delta$ 10 reduction fire  
\$162



**Sandy Singletary**

Mc Connells, SC  
Pitcher 11x10x8  
Porcelaineous stoneware;  
 $\Delta$ 6 electric  
\$220

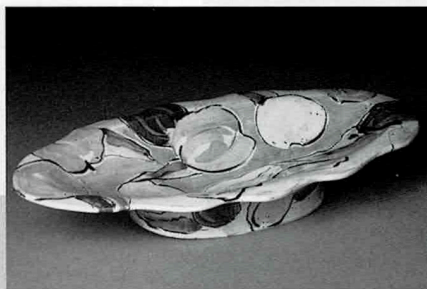
**William Shinn**

Santa Maria, CA  
Extruded Footed Wave 19x13x8  
Stoneware;  $\Delta$ 10 reduction fire  
\$225



**Emily Shoey**

Littlestown, PA  
"Fruit" Platter 1x3x19  
TerraCotta Maiolica  
\$150



**Suzanne Stumpf**

Natick, MA  
Six Triangulated Shino Plates  
2x11x11  
Porcelain;  $\Delta$ 10 reduction fire  
\$600

**Karen Swyler**

Helena, MT  
"Peach-breasted Pair" 6x5x5 ea  
Porcelain;  $\Delta$ 10 oxidation fire  
\$160

**Jordan Taylor**

Uniondale, PA  
"Monkey Jar" 13x10x10  
Stoneware with local clay;  
Δ11 wood fire  
\$200



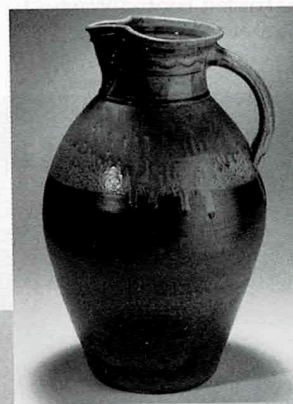
**Shoko Teruyama**

Athens, OH  
Candy Dish 7x4x4  
Porcelain; oxidation fire  
\$75



**John Thies**

Thurmont, MD  
Large Pitcher 20x13x13  
Stoneware; wood fire  
\$500

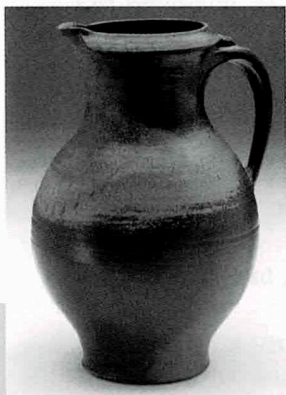


**Hong-Ling Wee**

New York, NY  
Bird Vase "Elegance"  
12x6x6  
Stoneware; Δ10 gas  
reduction fire  
\$600

**Jack Troy**

Huntingdon, PA  
Two Gallon Pitcher 15x8x8  
Stoneware; Anagama  
\$600



**Yichiu Tseng**

Oswego, NY  
"The Age" (Handbuilt Teapot)  
7x6x7  
Stoneware; Δ6 electric kiln  
\$600



**Joan Ulrich**

Brooklyn, NY  
Loopware Place Setting 1x11x11 (lg)  
Stoneware; oxidation fire  
\$160



**Deborah Williams**

Willingboro, NJ  
Turtle Tureen 9x11x9  
Stoneware; Δ6 oxidation fire  
\$400

**Tara Wilson**

Clyde, OH  
Salt & Pepper Shakers 6x9x6  
Stoneware; Δ11 wood fire  
\$200

# Awards

AMACO: American Art Clay Co., Inc.  
4717 W. 16th St.  
Indianapolis, IN 46222  
800-374-1600; [www.amaco.com](http://www.amaco.com)

Bailey Pottery Equipment Corp.  
PO Box 1577; 62 Tenbroeck Ave.  
Kingston, NY 12402  
800-431-6067; [www.BaileyPottery.com](http://www.BaileyPottery.com)

Central PA Potter's Group  
PO Box 255  
Hershey, PA 17033  
717-533-6696; email: [GoneTwoPot@aol.com](mailto:GoneTwoPot@aol.com)

Ceramics Monthly  
735 Ceramic Place, PO Box 6102  
Westerville, OH 43086  
614-523-1660; [www.ceramicsmonthly.org](http://www.ceramicsmonthly.org)

Clay Times  
PO Box 365  
Waterford, VA 20197-0365  
540-882-3576; [www.claytimes.com](http://www.claytimes.com)

Creative Industries  
1946 John Towers Ave.  
El Cajon, CA 92020  
800-748-5530; [www.creative-ind.com](http://www.creative-ind.com)

Del Val Potter's Supply Co.  
1230 E. Mermaid Lane  
Wyndmoor, PA 19038  
215-233-0655; email: [delvalpotters@earthlink.net](mailto:delvalpotters@earthlink.net)

Giffin Tec., Inc.  
PO Box 4057  
Boulder, CO 80306  
303-449-9142; [www.giffingrip.com](http://www.giffingrip.com)

International Technical Ceramics, Inc. (ITC)  
PO Box 1726  
Ponte Vedra, FL 32004  
904-285-0200

John Hesselberth & Ron Roy,  
Authors of "Mastering Cone 6 Glazes"  
26 Hanover Drive  
West Chester, PA 19382  
[www.frogpondpottery.com](http://www.frogpondpottery.com)

L&L Kiln Mfg. Inc.  
PO Box 1898  
Boothwyn, PA 19061  
877-468-5456; [www.hotkilns.com](http://www.hotkilns.com)

Laguna Clay Co.  
14400 Lomitas Ave.  
City of Industry, CA 91746  
800-452-4862; [www.lagunaclay.com](http://www.lagunaclay.com)



Lancaster Designer Craftsmen  
PO Box 204  
East Petersburg, PA 17520-0204  
717-560-8816

Law Offices of Zimmerman, Pfannebecker & Nuffort  
22 S. Duke St.  
Lancaster, PA 17602  
717-299-0711

Nottingham Arts  
PO Box 460  
San Marcos, CA 92079  
760-752-1020 [www.nottinghamarts.org](http://www.nottinghamarts.org)

Orton Ceramic Foundation  
6991 Old 3C Highway  
Westerville, OH 43086  
614-895-2663; [www.ortonceramic.com](http://www.ortonceramic.com)

PA Guild of Craftsmen  
10 Stable Mill Trail  
Richboro, PA 18954  
215-579-5997; [www.pennsylvaniacrafts.com](http://www.pennsylvaniacrafts.com)

Penn-Mo Fire Brick Co.  
PO Box 3798  
Harrisburg, PA 17105  
717-234-4504

Skutt Ceramic Products  
6441 SE Johnson Creek Blvd.  
Portland, OR 97206-9552  
503-774-6000; [www.skutt.com](http://www.skutt.com)

Standard Ceramic Supply Co.  
PO Box 4435  
Pittsburgh, PA 15205  
412-276-6333; [www.standardceramic.com](http://www.standardceramic.com)

# Director's Statement

12th Annual Strictly Functional Pottery National<sup>®</sup>

On behalf of the Market House Craft Center, I welcome you to the 12th Annual Strictly Functional Pottery National. The "SFPN" continues to display the best in current functional ceramics in the United States. The juror this year is Susan Peterson, potter, educator, and author. She taught at University of Southern California, The Idyllwild School of Music and Art, and is Professor Emerita at Hunter College of the City University of New York. She developed a 54 part TV film series on Wheels, Kilns & Clay shown on PBS. She has authored numerous books about ceramics and ceramists. Her home and studio are in Carefree, Arizona.

Despite the changes in number of applicants and increased sophistication of the work and slides, show rules and procedures remain the same. The juror sees only an ID number, the title, size, clay and firing description of each entry. The instructions to the juror are: to keep in mind the "Strictly Functional" title of the show, and select different styles, techniques, materials, and firing ranges. We received more entries this year than ever before. There were 1468 slides entered from 522 applicants from 46 states. From these 19 slide carousels Peterson selected 106 pieces to be in the exhibition.

Shortly after the opening weekend, the entire exhibit will be on line at: <http://www.art-craftpa.com/sfpn1.html> until time for the 13th Annual Strictly Functional Pottery National to be shown!

Special thanks to Mayor Charles Smithgall and the City of Lancaster for providing our beautiful exhibition space! Many volunteers make this exhibition a reality. Thanks to them, our sponsors, Susan Peterson, our applicants, and to you, who have come to see and appreciate the Strictly Functional Pottery National!

*Jean Lehman*

---

## Coming in 2005

The 13th Annual Strictly Functional Pottery National®

Juried by John Glick

April 23 through May 30, 2005

Founded and Presented by the Market House Craft Center

Visit The 12th Annual Strictly Functional Pottery National at <http://www.art-craftpa.com/sfn1.html>

### **Back Cover:**

**Bob Crystal**

Cornwall, VT

8 Quart Casserole 9x14x12

Stoneware; gas reduction fire

